

A

DIRECTIONAL CONTROLS





SOLTECH

DIRECTIONAL CONTROLS

SOLENOID CONTROLLED PILOT DIRECTIONAL CONTROL VALVES

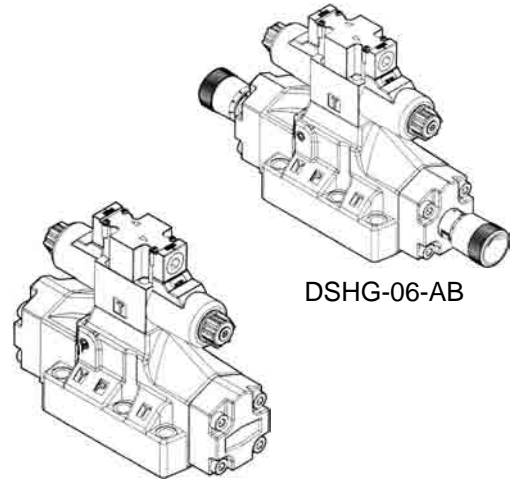
【DSHG-06】

ISO 4401-AE-08-4-A, NG-25

A

※SPECIFICATION

Model	Max. Flow (ℓ/min)/(U.S.GPM)	Max. Oper. Pres. (MPa)/(PSI)	Max. Pilot Pres. (MPa)/(PSI)	Weight (kg)
DSHG-06	500(132)	31.5(4570)	25(3630)	12
DSHG-06-AB				14
Model	Min. Required Pilot Pres. (MPa)/(PSI)	Max. T-Line Back Pressure MPa(PSI)		Max. Changeover Frequency (Cycles/Min)
DSHG-06	0.8(120)	Ext.Drain	Int.Drain	120
DSHG-06-AB		21(3050)	16(2320)	



DSHG-06-AB

DSHG-06

※ACCESSORIES

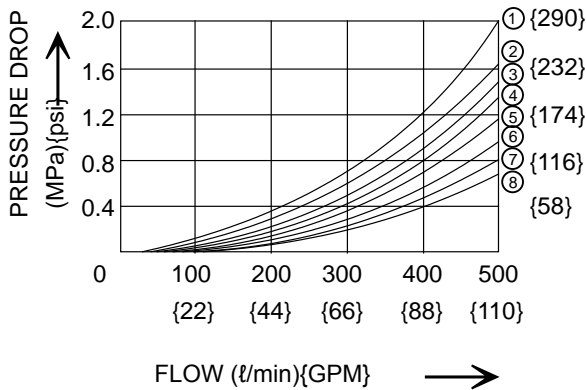
Model	Socket Head Screw Cap			O Ring	
	European Design Std.	North America Design Std.			
DSHG-06	M12 × 60 Lg.	1/2-13 UNC × 2-1/2 Lg.	6 Pcs	P14	2 Pcs
				P32	4 Pcs

※MODEL NUMBER DESIGNATION

DSHG	06	3C60	AB	(E)	(T)	(90)
SERIES NO.	VALVE SIZE 06 : NG25	SPOOL TYPE	ADJ. HANDHOLD	E: EXTERNAL PILOT OMIT: INTERNAL PILOT	T:INTERNAL DRAIN OMIT:EXTERNAL DRAIN	DESIGN NO. OMIT: DIN 912 BOLTS 90: UNC BOLTS (NORTH AMERICA)

※PERFORMANCE CURVE

DSHG-06



Spool Type	Pressure Drop Curve Numbers				
	P→A	B→T	P→B	A→T	P→T
2	8	5	8	7	---
3	6	4	6	7	4
4	8	5	8	7	---
40	8	5	8	7	---
5	8	4	5	7	1
6	5	3	5	4	1
60	6	5	6	7	1
7	6	4	6	7	---
9	6	4	6	7	---
10	8	5	8	7	---
11	8	4	5	7	---
12	8	5	8	7	---



DIRECTIONAL CONTROLS

SOLENOID CONTROLLED PILOT DIRECTIONAL CONTROL VALVES

SOLTECH

※LIST OF STANDARD MODEL AND MAXIMUM FLOW : 【DSHG-06】 :

No. Of Valve Position	Spool-Spring	Model No. & Description	Graphic Symbols 	Max. Flow lpm(U.S.GPM)			
				10MPa (1450psi)	16MPa (2320psi)	25MPa (3630psi)	31.5MPa (4570psi)
Three Positions	Spring Centered	3C2		500 (132)	500 (132)	410 (108) 500 (132)	310 (81.9) 500 (132)
		3C3		500 (132)	500 (132)	460 (122)	370 (97.8)
		3C4		500 (132)	500 (132)	410 (108) 500 (132)	310 (81.9) 500 (132)
		3C40		500 (132)	500 (132)	410 (108) 500 (132)	310 (81.9) 500 (132)
		3C5		500 (132)	500 (132)	425 (112)	350 (92.5)
		3C60		475 (125)	420 (111)	340 (89.8)	280 (74.0)
		3C7		500 (132)	500 (132)	450 (119)	360 (95.1)
		3C9		500 (132)	500 (132)	1040 (275)	870 (230)
		3C10		500 (132)	500 (132)	450 (119) 500 (132)	360 (95.1) 500 (132)
		3C11		500 (132)	500 (132)	450 (119) 500 (132)	360 (95.1) 500 (132)
		3C12		500 (132)	500 (132)	450 (119) 500 (132)	360 (95.1) 500 (132)
		Two Positions	Spring Offset	2B2		500 (132)	500 (132)
2B3							
2B4							
2B40							
2B7							

Notes: 1. The relation between max. flow and pilot pressure in the table above is as shown below.

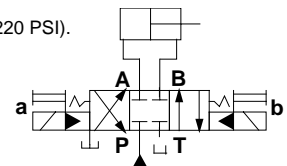
Maximum flow rate is constant regardless of pilot pressure.
Pilot Pressure more than 0.8 MPa (120 PSI).
In case pressure centred models, pilot pressure is more than 1 MPa (150 PSI).

500 (132)	450 (119)
	500 (132)

Pilot Pressure at 0.8 MPa (120 PSI).
In case pressure centred models, pilot pressure is more than 1 MPa (150 PSI)

Pilot Pressure at 1.5 MPa (220 PSI).

2. Max. flow in the table above represents the value in the flow condition of P → A → B → T (or P → B → A → T) as shown in the circuit diagram right.
In case the valve is used in the condition that either A or B port is blocked, the maximum flow differs according to a hydraulic circuit, therefore, please consult us for details.





SOLTECH

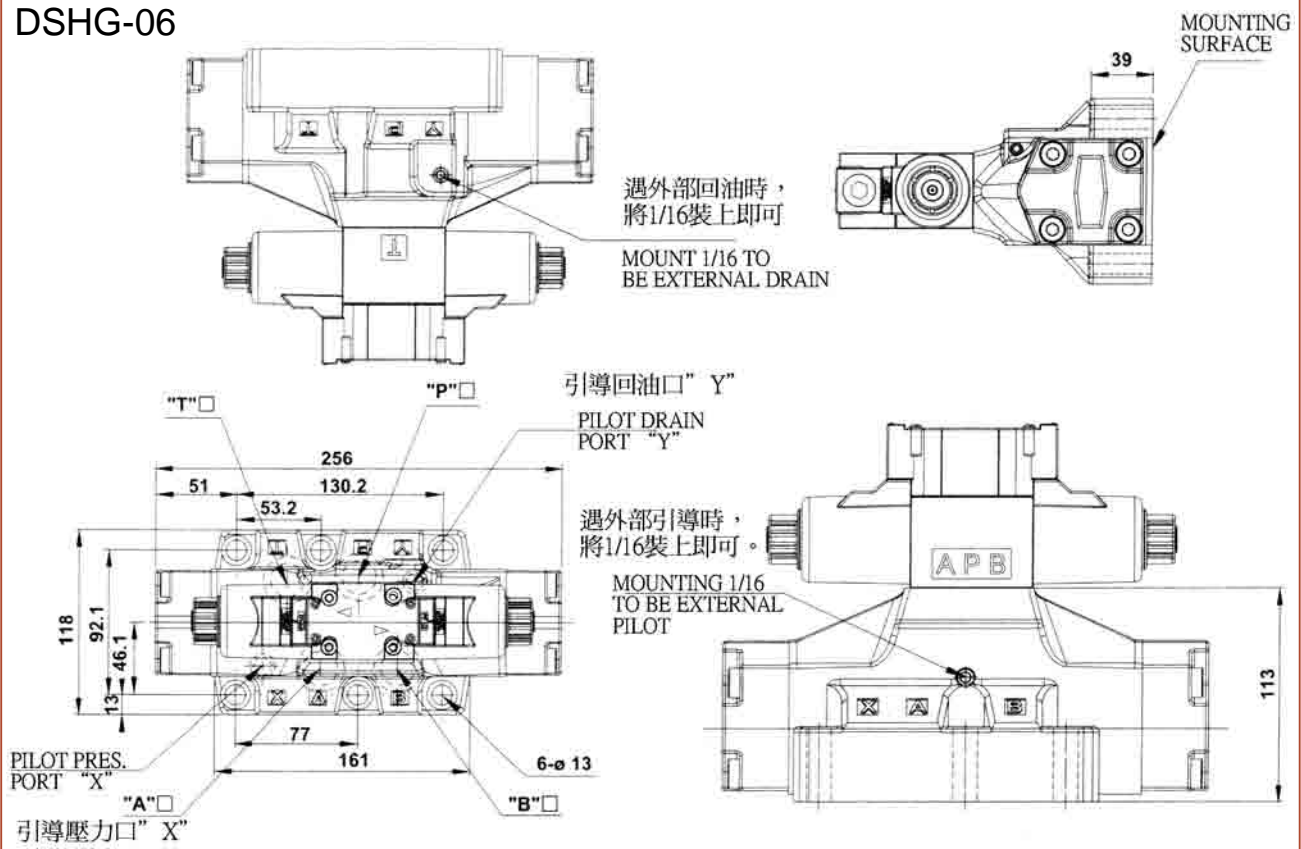
DIRECTIONAL CONTROLS

SOLENOID CONTROLLED PILOT OPERATED DIRECTIONAL VALVES

A

DIMENSIONS

DSHG-06



DIMENSIONS

DSHG-06-AB

