



# A

## DIRECTIONAL CONTROLS





SOLTECH

# DIRECTIONAL CONTROLS

## SOLENOID CONTROLLED PILOT DIRECTIONAL CONTROL VALVES

A

### 【DSHG-10】

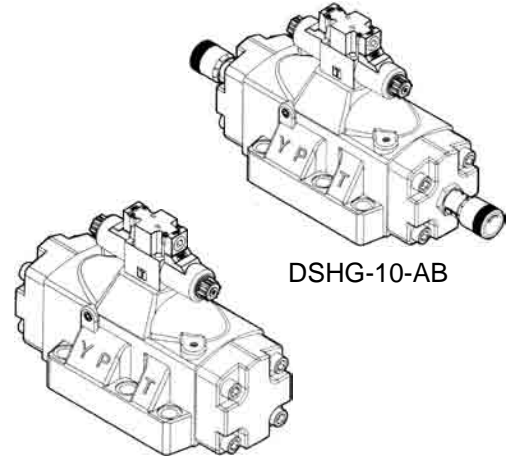
ISO 4401-AF-10-4-A, NG 32

#### ※SPECIFICATION

Model	Max. Flow (ℓ/min)/(U.S.GPM)	Max. Oper. Pres. (MPa)/(PSI)	Max. Pilot Pres. (MPa)/(PSI)	Weight (kg)
DSHG-10	1100(291)	31.5(4570)	25(3630)	50
DSHG-10-AB				51.5
Model	Min. Required Pilot Pres. (MPa)/(PSI)	Max. T-Line Back Pressure MPa(PSI)		Max. Changeover Frequency (Cycles/Min)
DSHG-10	1.0(150)	Ext.Drain	Int.Drain	110
DSHG-10-AB		21(3050)	16(2320)	

#### ※ACCESSORIES

Model	Socket Head Screw Cap			O Ring	
	European Design Std.	North America Design Std.			
DSHG-10	M20 x 75 Lg.	3/4-10 UNC x 3 Lg.	6 Pcs	P20	2 Pcs
				P42	4 Pcs



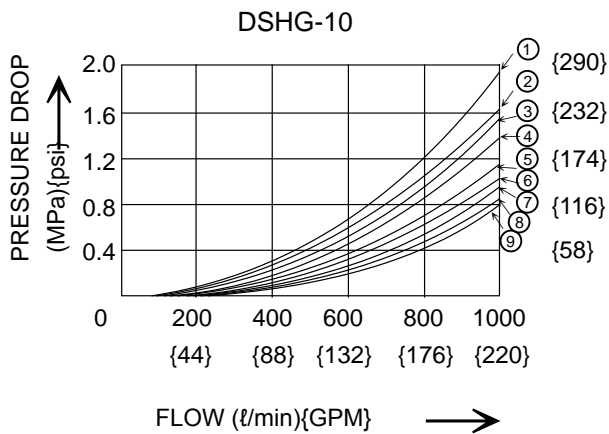
DSHG-10-AB

DSHG-10

#### ※MODEL NUMBER DESIGNATION

DSHG	10	3C60	AB	(E)	(T)	(90)
SERIES NO.	VALVE SIZE 06 : NG 32	SPOOL TYPE	ADJ. HANDHOLD	E: EXTERNAL PILOT OMIT: INTERNAL PILOT	T:INTERNAL DRAIN OMIT:EXTERNAL DRAIN	DESIGN NO. OMIT: DIN 912 BOLTS 90: UNC BOLTS (NORTH AMERICA)

#### ※PERFORMANCE CURVE



Spool Type	Pressure Drop Curve Numbers				
	P→A	B→T	P→B	A→T	P→T
2	9	6	9	8	---
3	7	6	7	7	5
4	9	6	9	6	---
40	9	6	9	8	---
5	9	6	8	6	1
6	5	3	5	4	2
60	8	5	8	5	2
7	7	6	7	7	---
9	7	6	7	8	---
10	9	5	9	8	---
11	9	6	8	7	---
12	9	7	9	6	---



# DIRECTIONAL CONTROLS

## SOLENOID CONTROLLED PILOT DIRECTIONAL CONTROL VALVES

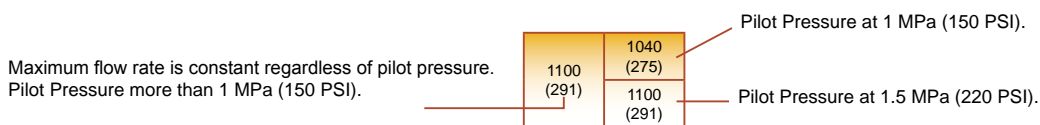
SOLTECH

A

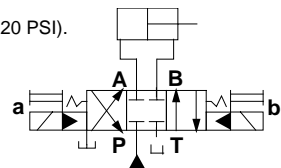
※LIST OF STANDARD MODEL AND MAXIMUM FLOW : 【DSHG-10】 :

No. Of Valve Position	Spool-Spring	Model No. & Description	Graphic Symbols 	Max. Flow lpm(U.S.GPM)			
				10MPa (1450psi)	16MPa (2320pis)	25MPa (3630psi)	31.5MPa (4570psi)
Three Positions	Spring Centered	3C2		1100 (291)	1100 (291)	950 (251) 1100 (291)	750 (198) 1100 (291)
		3C3		1100 (291)	1100 (291)	1060 (280)	895 (236)
		3C4		1100 (291)	1100 (291)	950 (251) 1100 (291)	750 (198) 1100 (291)
		3C40		1100 (291)	1100 (291)	950 (251) 1100 (291)	750 (198) 1100 (291)
		3C5		1100 (291)	1100 (291)	980 (259)	850 (225)
		3C60		1050 (277)	940 (248)	700 (185)	570 (151)
		3C7		1100 (291)	1100 (291)	1040 (275) 1100 (291)	870 (230) 1100 (291)
		3C9		1100 (291)	1100 (291)	1040 (275)	870 (230)
		3C10		1100 (291)	1100 (291)	950 (251) 1100 (291)	750 (198) 1100 (291)
		3C11		1100 (291)	1100 (291)	950 (251) 1100 (291)	750 (198) 1100 (291)
		3C12		1100 (291)	1100 (291)	950 (251) 1100 (291)	750 (198) 1100 (291)
		Two Positions	Spring Offset	2B2		1100 (291)	1100 (291)
2B3							
2B4							
2B40							
2B7							

Notes: 1. The relation between m ax. flow and pilot pressure in the table above is as shown below.



2. Max. flow in the table above represents the value in the flow condition of P → A → B → T (or P → B → A → T) as shown in the circuit diagram right.  
In case the valve is used in the condition that either A or B port is blocked, the maximum flow differs according to a hydraulic circuit, therefore, please consult us for details.





SOLTECH

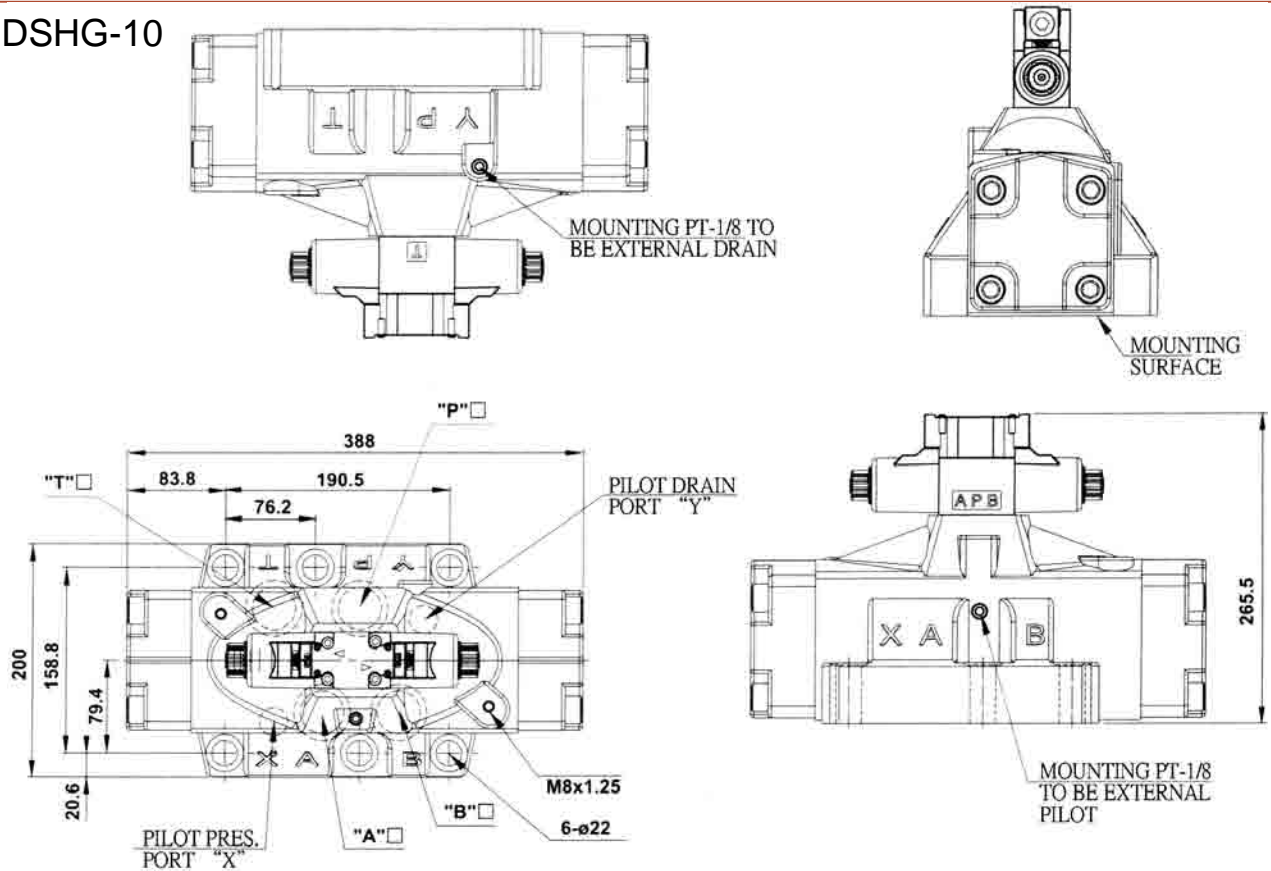
# DIRECTIONAL CONTROLS

## SOLENOID CONTROLLED PILOT OPERATED DIRECTIONAL VALVES

A

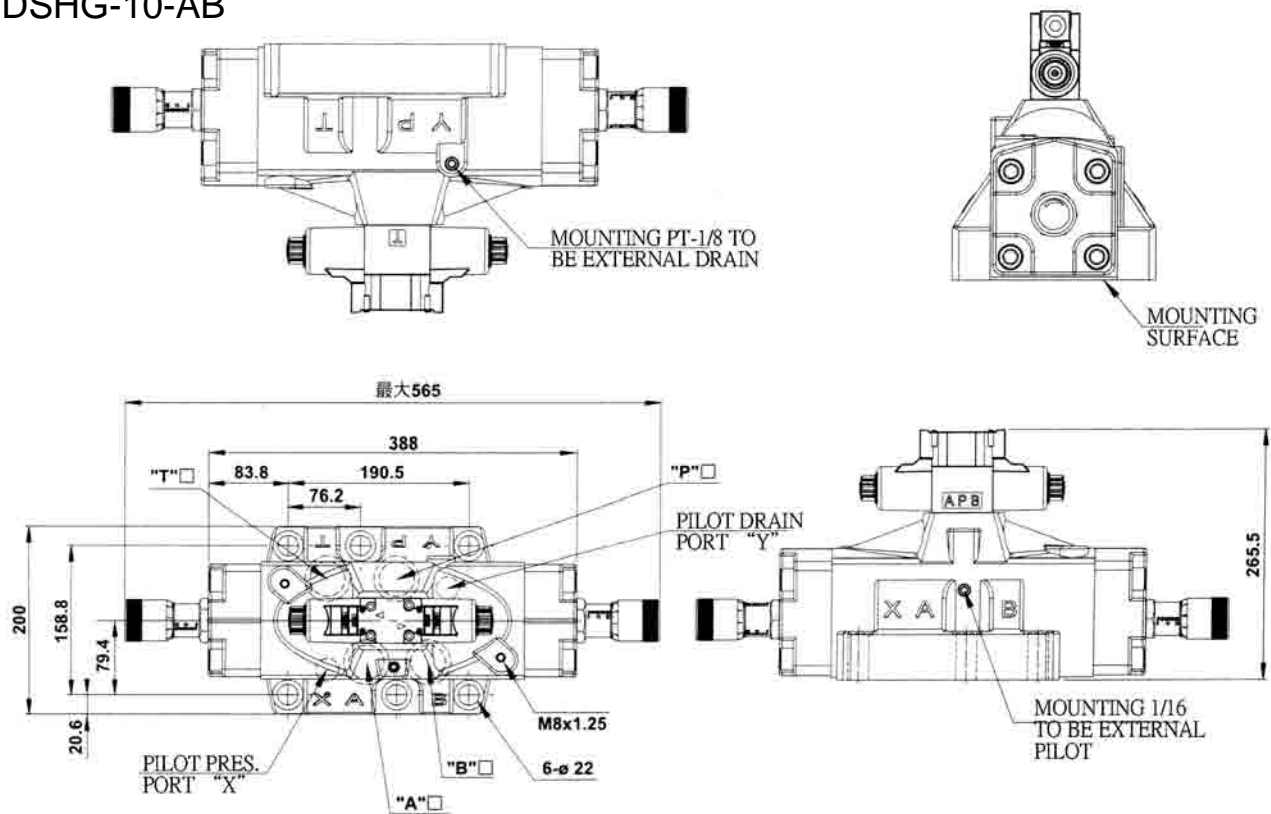
### DIMENSIONS

DSHG-10



### DIMENSIONS

DSHG-10-AB





SOLTECH

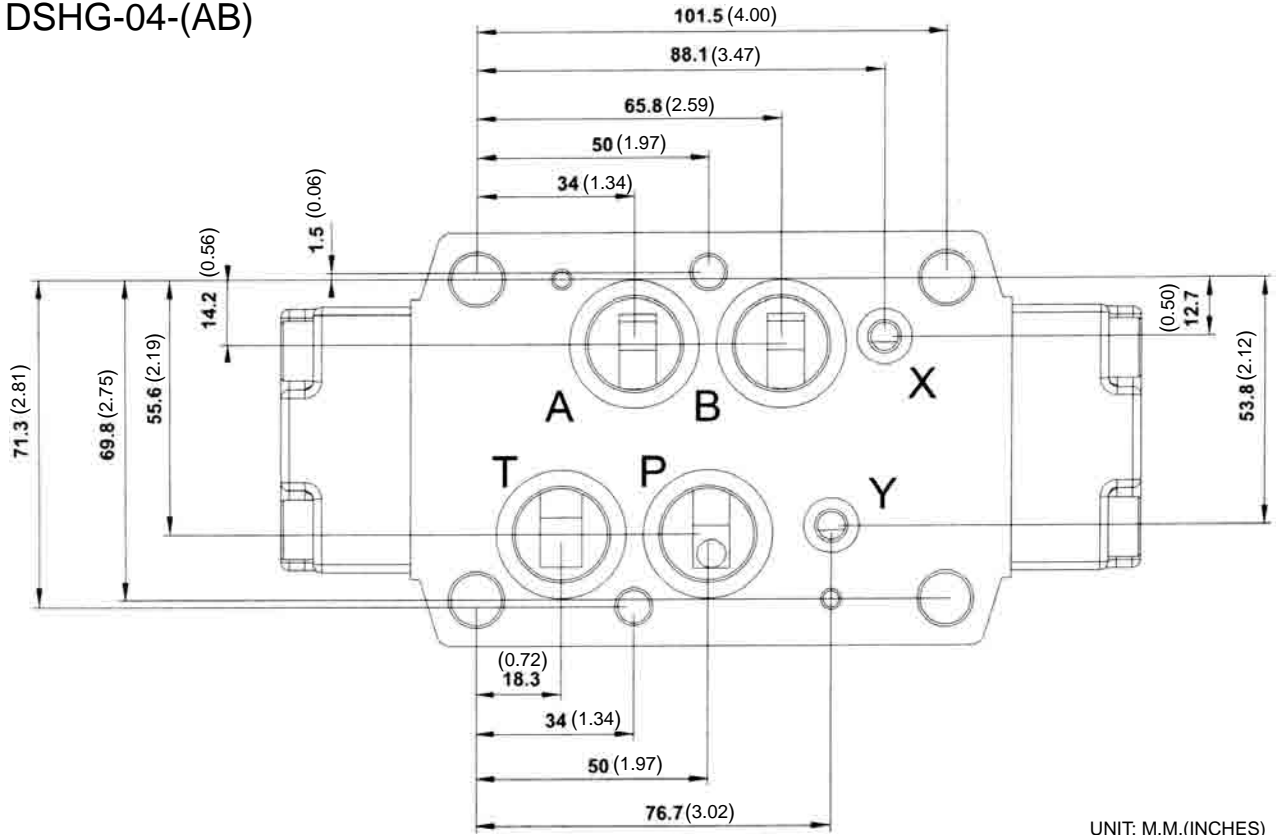
# DIRECTIONAL CONTROLS

## MOUNTING INTERFACE

A

### DIMENSIONS

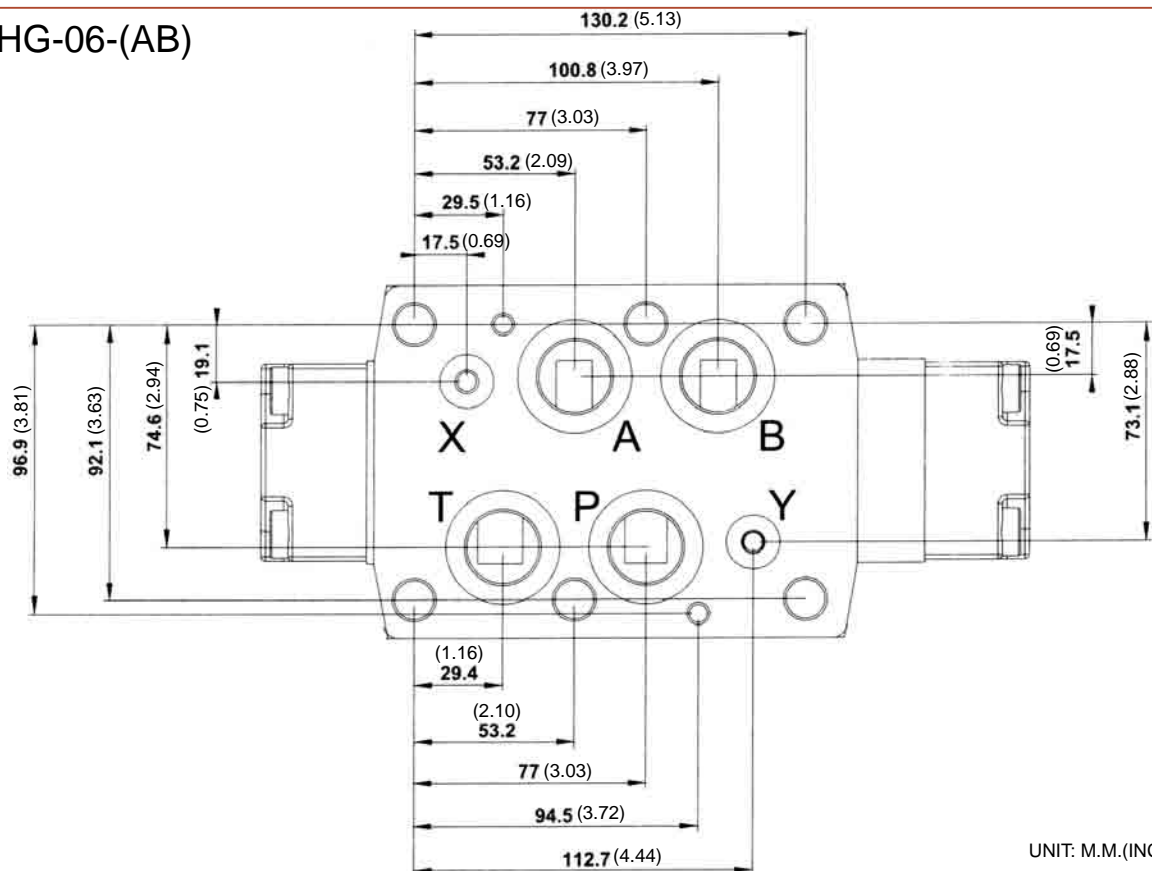
DSHG-04-(AB)



UNIT: M.M.(INCHES)

### DIMENSIONS

DSHG-06-(AB)



UNIT: M.M.(INCHES)





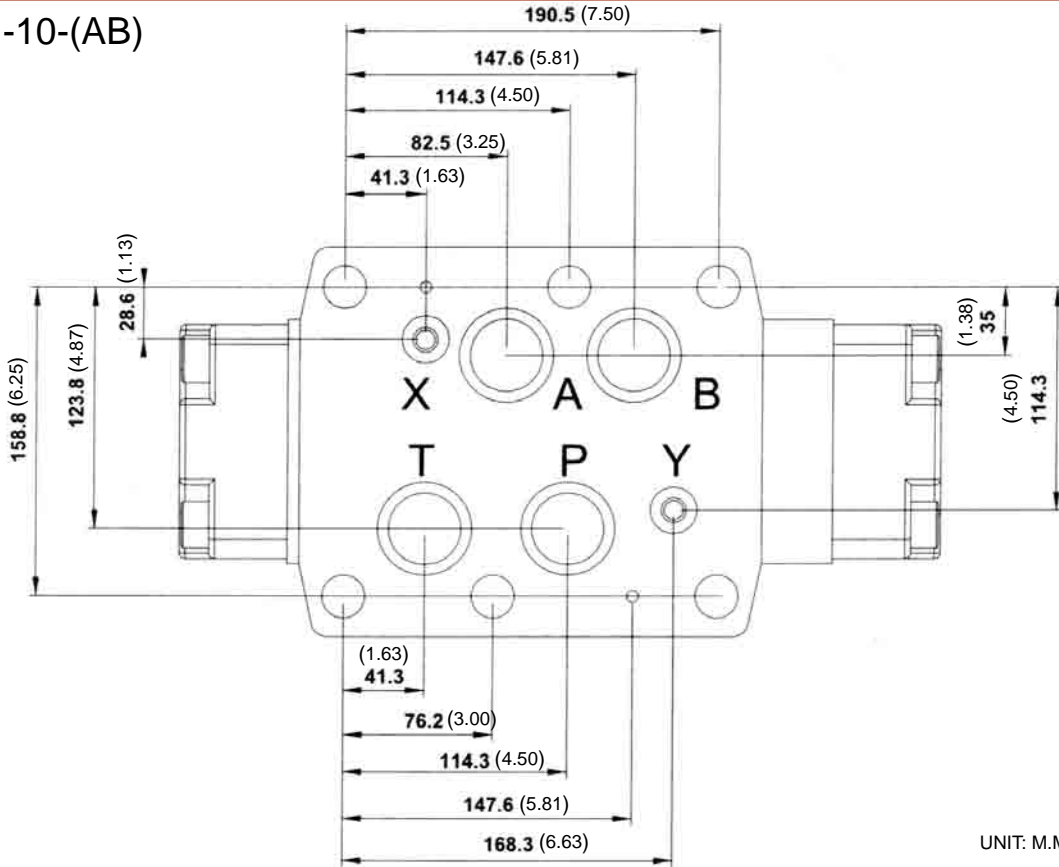
SOLTECH

# DIRECTIONAL CONTROLS

## MOUNTING INTERFACE

### DSHG-10-(AB)

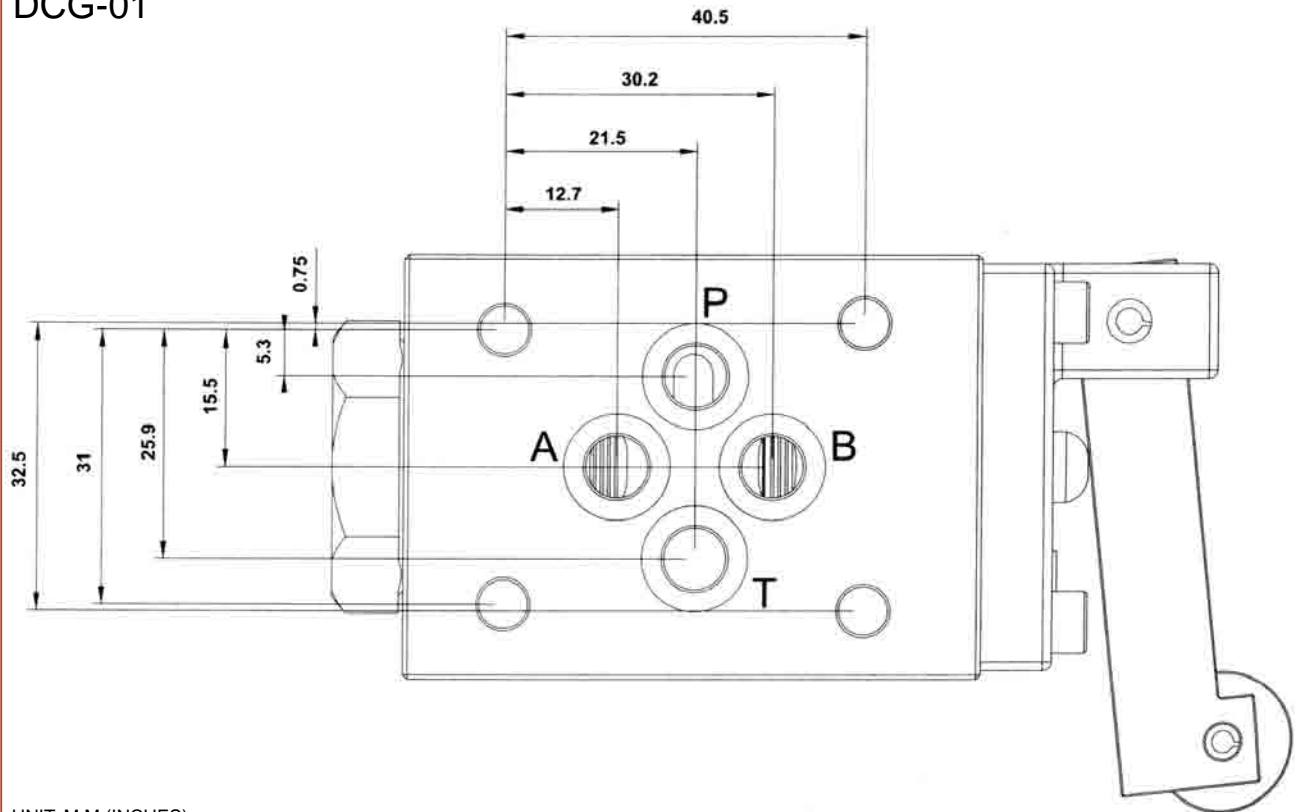
#### DIMENSIONS



UNIT: M.M.(INCHES)

### DCG-01

#### DIMENSIONS



UNIT: M.M.(INCHES)

# A