

# ONE-TOUCH FITTINGS

*Used in pneumatic piping &*

*Used for a wide variety of models to meet all needs.*



## PRODUCT DESCRIPTION

### FEATURES/BENEFITS

- One-Touch push-to-connect configuration allows an instant tubing connection.
- All PC models are useful for piping in confined space, given its six-angle wrench processing inside
- Immediate strong engineering plastic(POM) sleeve disconnection by pressing the sleeve and then simply removing tube from fitting.
- Fittings are equipped with Teflon-treatment already or o-ring on the thread.
- Nickel-plated brass body ensures anti-contamination properties for an extended product life

### SPECIFICATION

- Applicable Fluid Type / AIR (No other type of gas or liquid)
- Working Pressure Range / 0~150PSI / 0~9.9Kgf/cm<sup>2</sup>(0~990KPa)
- Negative Pressure / -29.5in Hg / -750mmHg(-750Torr)
- Working Temperature Range / 32~140°F / 0~60°C

## ORDER

### PLACING AN ORDER OR REQUEST

Specifying Standard Items:

Please specify the following:

1. Series(Item)Number
2. Tube Outside Dia.
3. Thread Size

### THREAD SIZE

01:1/8" / N01:1/8"NPT / G01:1/8"BSPP

02:1/4" / N02:1/4"NPT / G02:1/4"BSPP

03:3/8" / N03:3/8"NPT / G03:3/8"BSPP

04:1/2" / N04:1/2"NPT / G04:1/2"BSPP

### Example of a request

PL series one touch fitting,  
8mm tube with 1/4" BSPT thread



PC series one touch fitting,  
1/4" tube with 1/4" NPT thread



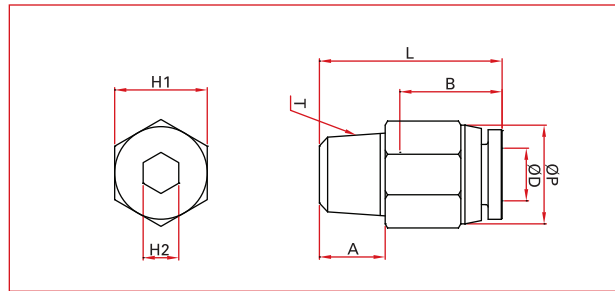
SC series G type one touch fitting,  
8mm tube with 1/4" BSPP thread



## ONE-TOUCH FITTINGS

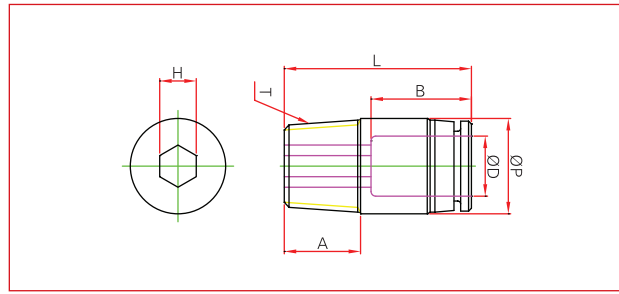
### >METRIC SYSTEM

#### PC male straight



MODEL	ØD	T (Thread)	L	A	B	H1	H2	ØP	ORIFICE
PC-04-01	4	PT1/8	20.3	8	15	10	3	10	3
PC-04-02	4	PT1/4	18.4	10	15	14	3	10	3
PC-04-03	4	PT3/8	19	11	15	17	4	10	3
PC-04-M5	4	M5×P0.8	20.1	4	15	10	2	10	2
PC-04-M6	4	M6×P1.0	20.6	4	15	10	2.5	10	3
PC-06-01	6	PT1/8	21	8	15	12	4	12	4
PC-06-02	6	PT1/4	22.8	10	15	14	4	12	4
PC-06-03	6	PT3/8	20.8	11	15	17	4	12	4
PC-06-04	6	PT1/2	24.8	14	15	21	4	12	4
PC-06-M5	6	M5×P0.8	21	4	15	12	2	12	2
PC-06-M6	6	M6×P1.0	21	4	15	12	2.5	12	3
PC-08-01	8	PT1/8	25.4	8	18	14	5	14	5
PC-08-02	8	PT1/4	24.4	10	18	14	6	14	6
PC-08-03	8	PT3/8	21.4	11	18	17	6	14	6
PC-08-04	8	PT1/2	25.4	14	18	21	6	14	6
PC-10-01	10	PT1/8	29.5	8	22	17	5	17	5
PC-10-02	10	PT1/4	31	10	22	17	6	17	6
PC-10-03	10	PT3/8	28.5	11	22	17	8	17	8
PC-10-04	10	PT1/2	26.8	14	22	21	8	17	8
PC-12-01	12	PT1/8	32	8	22	21	5	20	5
PC-12-02	12	PT1/4	34	10	22	21	6	20	6
PC-12-03	12	PT3/8	31	11	22	21	8	20	8
PC-12-04	12	PT1/2	33.5	14	22	21	8	20	8
PC-16-03	16	PT3/8	37.8	11	24	24	8	24	8
PC-16-04	16	PT1/2	39.8	14	24	24	10	24	10

**POC** Round male straight

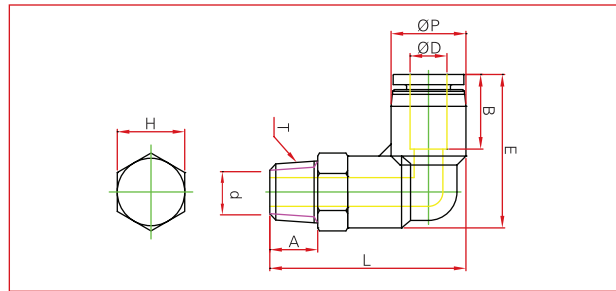


MODEL	ØD	T (Thread)	L	A	B	H	ØP	ORIFICE
POC-04-01	4	PT1/8	20.3	8	15	3	10	3
POC-04-02	4	PT1/4	18.4	10	15	3	10	3
POC-04-03	4	PT3/8	19	11	15	4	10	3
POC-04-M5	4	M5×P0.8	20.1	4	15	2	10	2
POC-04-M6	4	M6×P1.0	20.6	4	15	2.5	10	3
POC-06-01	6	PT1/8	21	8	15	4	12	4
POC-06-02	6	PT1/4	22.8	10	15	4	12	4
POC-06-03	6	PT3/8	20.8	11	15	4	12	4
POC-06-04	6	PT1/2	24.8	14	15	4	12	4
POC-06-M5	6	M5×P0.8	21	4	15	2	12	2
POC-06-M6	6	M6×P1.0	21	4	15	2.5	12	3
POC-08-01	8	PT1/8	25.4	8	18	5	14	5
POC-08-02	8	PT1/4	24.4	10	18	6	14	6
POC-08-03	8	PT3/8	21.4	11	18	6	14	6
POC-08-04	8	PT1/2	25.4	14	18	6	14	6
POC-10-01	10	PT1/8	29.5	8	22	5	17	5
POC-10-02	10	PT1/4	31	10	22	6	17	6
POC-10-03	10	PT3/8	28.5	11	22	8	17	8
POC-10-04	10	PT1/2	26.8	14	22	8	17	8
POC-12-01	12	PT1/8	32	8	22	5	20	5
POC-12-02	12	PT1/4	34	10	22	6	20	6
POC-12-03	12	PT3/8	31	11	22	8	20	8
POC-12-04	12	PT1/2	33.5	14	22	8	20	8
POC-16-03	16	PT3/8	37.8	11	24	8	24	8
POC-16-04	16	PT1/2	39.8	14	24	10	24	10

## ONE-TOUCH FITTINGS

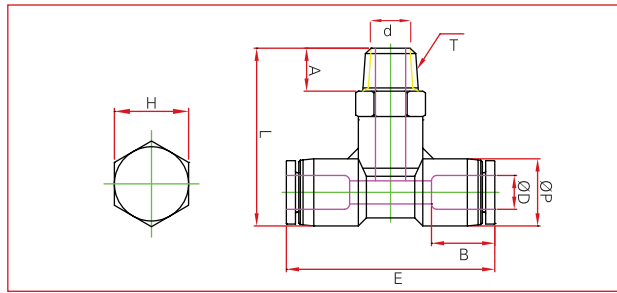
### >METRIC SYSTEM

#### PL male elbow



MODEL	ØD	T (Thread)	E	L	A	B	H	ØP	d	ORIFICE
PL-04-01	4	PT1/8	24	29.7	8	15	10	11	6.5	2.5
PL-04-02	4	PT1/4	26.3	32.7	10	15	14	11	8.7	2.5
PL-04-03	4	PT3/8	28	34	11	15	17	11	1.7	2.5
PL-04-M5	4	M5×P0.8	24	26.5	4	15	10	11	2.5	2.5
PL-04-M6	4	M6×P1.0	24	27	4	15	10	11	2.5	2.5
PL-06-01	6	PT1/8	25.2	30.9	8	15	12	13	6.5	2.5
PL-06-02	6	PT1/4	26.9	33.9	10	15	14	13	8.5	4
PL-06-03	6	PT3/8	28.6	35.2	11	15	17	13	11.2	4
PL-06-04	6	PT1/2	30.9	38.7	14	15	21	13	14	4.5
PL-06-M5	6	M5×P0.8	25.2	38.2	4	15	12	13	2.5	2.5
PL-06-M6	6	M6×P1.0	25.2	28.7	5	15	12	13	2.5	2.5
PL-08-01	8	PT1/8	30.5	35.4	8	18	14	14.4	6.8	4
PL-08-02	8	PT1/4	30.5	37.4	10	18	14	14.4	8.2	4
PL-08-03	8	PT3/8	32.2	38.7	11	18	17	14.4	11.9	4
PL-08-04	8	PT1/2	34.5	42.2	14	18	21	14.4	13.9	4
PL-10-01	10	PT1/8	37.4	42	8	22	17	18.4	6.5	6.5
PL-10-02	10	PT1/4	37.4	44	10	22	17	18.4	8.3	6.5
PL-10-03	10	PT3/4	37.4	45	11	22	17	18.4	11.7	6.5
PL-10-04	10	PT1/2	39.7	48.5	14	22	21	18.4	14.3	7.5
PL-12-01	12	PT1/8	40.4	44.5	8	22	19	21	6.5	6.5
PL-12-02	12	PT1/4	40.4	46.5	10	22	19	21	8	6.5
PL-12-03	12	PT3/8	40.4	48.5	11	22	19	21	11.5	7
PL-12-04	12	PT1/2	41.5	51	14	22	21	21	14	7.5
PL-16-03	16	PT3/8	46.2	57.5	11	24	24	26	11	11
PL-16-04	16	PT1/2	46.2	60.5	14	24	24	26	14	14

**PT** male branch tee

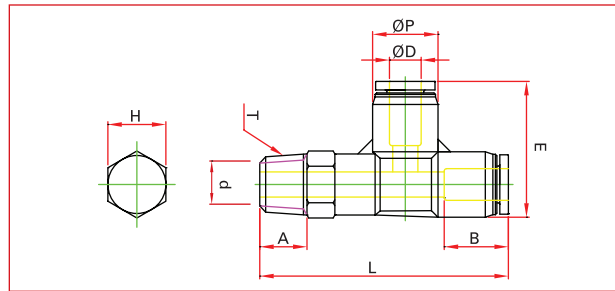


MODEL	ØD	T (Thread)	E	L	A	B	H	ØP	d	ORIFICE
PT-04-01	4	PT1/8	29.7	36.6	8	15	10	11	6.5	2.5
PT-04-02	4	PT1/4	32.7	36.6	10	15	14	11	8.7	2.5
PT-04-03	4	PT3/8	34	36.6	11	15	17	11	11.7	2.5
PT-04-M5	4	M5×P0.8	26.5	36.6	4	15	10	11	2.5	2.5
PT-04-M6	4	M6×P1.0	27	36.6	4	15	10	11	2.5	2.5
PT-06-01	6	PT1/8	30.9	37.8	8	15	12	13	6.5	2.5
PT-06-02	6	PT1/4	33.9	37.8	10	15	14	13	8.5	4
PT-06-03	6	PT3/8	35.2	37.8	11	15	17	13	11.2	4
PT-06-04	6	PT1/2	38.7	37.8	14	15	21	13	14	4.5
PT-06-M5	6	M5×P0.8	28.2	37.8	4	15	12	13	2.5	2.5
PT-06-M6	6	M6×P1.0	28.7	37.8	4	15	12	13	2.5	2.5
PT-08-01	8	PT1/8	35.4	45	8	18	14	14.4	6.8	4
PT-08-02	8	PT1/4	37.4	45	10	18	14	14.4	8.2	4
PT-08-03	8	PT3/8	38.7	45	11	18	17	14.4	11.9	4
PT-08-04	8	PT1/2	42.2	45	14	18	21	14.4	13.9	4
PT-10-01	10	PT1/8	42	55.4	8	22	17	18.4	6.5	6.5
PT-10-02	10	PT1/4	44	55.4	10	22	17	18.4	8.3	6.5
PT-10-03	10	PT3/8	45	55.4	11	22	17	18.4	11.7	6.5
PT-10-04	10	PT1/2	48.5	55.4	14	22	21	18.4	14.3	7.5
PT-12-01	12	PT1/8	44.5	59	8	22	19	21	6.5	6.5
PT-12-02	12	PT1/4	46.5	59	10	22	19	21	8	6.5
PT-12-03	12	PT3/8	48.5	59	11	22	19	21	11.5	6.5
PT-12-04	12	PT1/2	51	59	14	22	21	21	14	6.5
PT-16-03	16	PT3/8	57.5	65	11	24	24	26	11	11
PT-16-04	16	PT1/2	60.5	65	14	24	24	26	14	14

## ONE-TOUCH FITTINGS

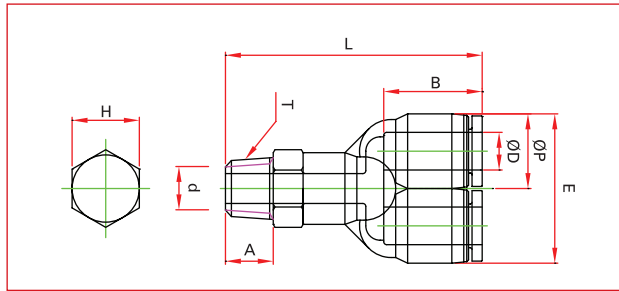
>METRIC SYSTEM

### PST male run tee



MODEL	ØD	T (Thread)	L	E	A	B	H	ØP	d	ORIFICE
PST-04-01	4	PT1/8	38.8	24	8	15	10	11	6.5	2.5
PST-04-02	4	PT1/4	41.8	26.3	10	15	14	11	8.7	2.5
PST-04-03	4	PT3/8	43.1	28	11	15	17	11	11.7	2.5
PST-04-M5	4	M5×P0.8	35.6	24	4	15	10	11	2.5	2.5
PST-04-M6	4	M6×P1.0	36.1	24	5	15	10	11	2.5	2.5
PST-06-01	6	PT1/8	40.1	25.2	8	15	12	13	6.5	2.5
PST-06-02	6	PT1/4	43	26.9	10	15	14	13	8.5	4
PST-06-03	6	PT3/8	44.3	28.6	11	15	17	13	11.2	4
PST-06-04	6	PT1/2	47.8	30.9	14	15	21	13	14	4.5
PST-06-M5	6	M5×P0.8	37.3	25.2	4	15	12	13	2.5	2.5
PST-06-M6	6	M6×P1.0	37.8	25.2	5	15	12	13	2.5	2.5
PST-08-01	8	PT1/8	46.3	30.5	8	18	14	14.4	6.8	4
PST-08-02	8	PT1/4	48.3	30.5	10	18	14	14.4	8.2	4
PST-08-03	8	PT3/8	49.6	32.2	11	18	17	14.4	11.9	4
PST-08-04	8	PT1/2	53.1	34.5	14	18	21	14.4	13.9	4
PST-10-01	10	PT1/8	55	37.4	8	22	17	18.4	6.5	6.5
PST-10-02	10	PT1/4	57	37.4	10	22	17	18.4	8.3	6.5
PST-10-03	10	PT3/4	58	37.4	11	22	17	18.4	11.7	6.5
PST-10-04	10	PT1/2	61.5	39.7	14	22	21	18.4	14.3	7.5
PST-12-01	12	PT1/8	58	40.4	8	22	19	21	6.5	6.5
PST-12-02	12	PT1/4	60	40.4	10	22	19	21	8	6.5
PST-12-03	12	PT3/8	62	40.4	11	22	19	21	11.5	6.5
PST-12-04	12	PT1/2	64.5	41.5	14	22	21	21	14	6.5

## PWT male Y



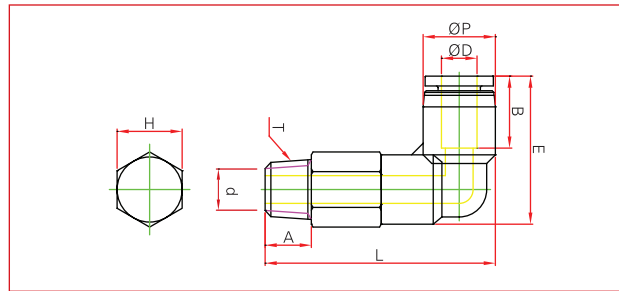
MODEL	ØD	T (Thread)	L	E	A	B	H	ØP	d	ORIFICE
PWT-04-01	4	PT1/8	38.8	22.1	8	15	10	11	6.5	2.5
PWT-04-02	4	PT1/4	41.8	22.1	10	15	14	11	8.7	2.5
PWT-04-03	4	PT3/8	43.1	22.1	11	15	17	11	11.7	2.5
PWT-04-M5	4	M5×P0.8	35.6	22.1	4	15	10	11	2.5	2.5
PWT-04-M6	4	M6×P1.0	36.1	22.1	5	15	10	11	2.5	2.5
PWT-06-01	6	PT1/8	40.1	26	8	15	12	13	6.5	2.5
PWT-06-02	6	PT1/4	43	26	10	15	14	13	8.5	4
PWT-06-03	6	PT3/8	44.3	26	11	15	17	13	11.2	4
PWT-06-04	6	PT1/2	47.8	26	14	15	21	13	14	4.5
PWT-06-M5	6	M5×P0.8	37.3	26	4	15	12	13	2.5	2.5
PWT-06-M6	6	M6×P1.0	37.8	26	5	15	12	13	2.5	2.5
PWT-08-01	8	PT1/8	46.3	29.8	8	18	14	14.4	6.8	4
PWT-08-02	8	PT1/4	48.3	29.8	10	18	14	14.4	8.2	4
PWT-08-03	8	PT3/8	49.6	29.8	11	18	17	14.4	11.9	4
PWT-08-04	8	PT1/2	53.1	29.8	14	18	21	14.4	13.9	4
PWT-10-01	10	PT1/8	55	36.8	8	22	17	18.4	6.5	6.5
PWT-10-02	10	PT1/4	57	36.8	10	22	17	18.4	8.3	6.5
PWT-10-03	10	PT3/4	58	36.8	11	22	17	18.4	11.7	6.5
PWT-10-04	10	PT1/2	61.5	36.8	14	22	21	18.4	14.3	7.5
PWT-12-01	12	PT1/8	58	42.4	8	22	19	21	6.5	6.5
PWT-12-02	12	PT1/4	60	42.4	10	22	19	21	8	6.5
PWT-12-03	12	PT3/8	62	42.4	11	22	19	21	11.5	6.5
PWT-12-04	12	PT1/2	64.5	42.4	14	22	21	21	14	7.5



## ONE-TOUCH FITTINGS

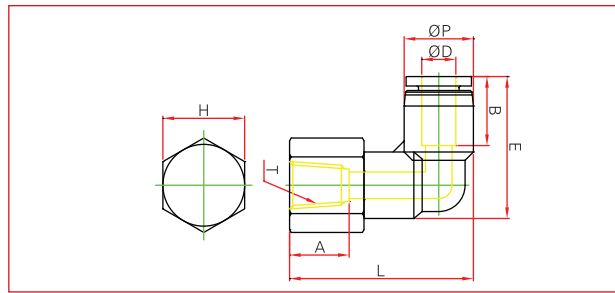
### >METRIC SYSTEM

## PLL extended male elbow



MODEL	ØD	T (Thread)	E	L	A	B	H	ØP	d	ORIFICE
PLL-04-01	4	PT1/8	24	42.7	8	15	10	11	6.5	2.5
PLL-04-02	4	PT1/4	24	44.7	10	15	14	11	8.7	2.5
PLL-04-03	4	PT3/8	24	45.9	11	15	17	11	11.7	2.5
PLL-04-M5	4	M5×P0.8	24	39	4	15	10	11	2.5	2.5
PLL-04-M6	4	M6×P1.0	24	40	5	15	10	11	2.5	2.5
PLL-06-01	6	PT1/8	25.2	45.3	8	15	12	13	6.5	2.5
PLL-06-02	6	PT1/4	25.2	47.3	10	15	14	13	8.5	4
PLL-06-03	6	PT3/8	25.2	48.5	11	15	17	13	11.2	4
PLL-06-04	6	PT1/2	25.2	52.3	14	15	21	13	14	4.5
PLL-06-M5	6	M5×P0.8	25.2	41.6	4	15	12	13	2.5	2.5
PLL-06-M6	6	M6×P1.0	25.2	42.6	5	15	12	13	2.5	2.5
PLL-08-01	8	PT1/8	30.5	49.6	8	18	14	14.4	6.8	4
PLL-08-02	8	PT1/4	30.5	51.7	10	18	14	14.4	8.2	4
PLL-08-03	8	PT3/8	30.5	53.2	11	18	17	14.4	11.9	4
PLL-08-04	8	PT1/2	30.5	59.3	14	18	21	14.4	13.9	4
PLL-10-01	10	PT1/8	37.4	59.7	8	22	17	18.4	6.5	6.5
PLL-10-02	10	PT1/4	37.4	61.7	10	22	17	18.4	8.3	6.5
PLL-10-03	10	PT3/8	37.4	62.9	11	22	17	18.4	11.7	6.5
PLL-10-04	10	PT1/2	37.4	65.7	14	22	21	18.4	14.3	7.5
PLL-12-01	12	PT1/8	40.4	63.7	8	22	21	21	6.5	6.5
PLL-12-02	12	PT1/4	40.4	65.7	10	22	21	21	8	6.5
PLL-12-03	12	PT3/8	40.4	66.9	11	22	21	21	11.5	6.5
PLL-12-04	12	PT1/2	40.4	69.7	14	22	21	21	14	7.5

## PLF extended female elbow

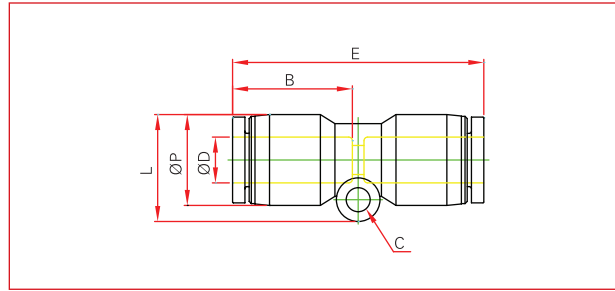


MODEL	ØD	ØP	T (Thread)	L	E	A	B	H (Hex)	ORIFICE
PLF04-M5	4	11	M5 × P0.8	23.8	24	7.0	15	10	2.5
PLF04-M6	4	11	M6 × P0.8	23.8	24	7.0	15	10	2.5
PLF04-01	4	11	R1/8	24.8	24	8.0	15	14	2.5
PLF04-02	4	11	R1/4	26.8	24	10.0	15	17	2.5
PLF06-M5	6	13	M5 × P0.8	29.8	25.2	7.0	15	12	4
PLF06-M6	6	13	M6 × P0.8	29.8	25.2	7.0	15	12	4
PLF06-01	6	13	R1/8	30.8	25.2	8.0	15	14	4
PLF06-02	6	13	R1/4	32.8	25.2	10.0	15	17	4
PLF06-03	6	13	R3/8	33.8	25.2	11.0	15	22	4
PLF06-04	6	13	R1/2	35.8	25.2	14.0	15	24	4
PLF08-01	8	14.4	R1/8	33.2	30.5	8.0	18	14	6
PLF08-02	8	14.4	R1/4	35.2	30.5	10.0	18	17	6
PLF08-03	8	14.4	R3/8	36.2	30.5	11.0	18	22	6
PLF08-04	8	14.4	R1/2	38.2	30.5	14.0	18	24	6
PLF10-01	10	18.4	R1/8	37.3	37.4	8.0	22	17	7
PLF10-02	10	18.4	R1/4	37.3	37.4	10.0	22	17	7
PLF10-03	10	18.4	R3/8	38.3	37.4	11.0	22	22	7
PLF10-04	10	18.4	R1/2	40.3	37.4	14.0	22	24	7
PLF12-01	12	21	R1/4	41.7	40.4	10.0	22	19	10
PLF12-03	12	21	R3/8	42.7	40.4	11.0	22	22	10
PLF12-04	12	21	R1/2	44.7	40.4	14.0	22	24	10

## ONE-TOUCH FITTINGS

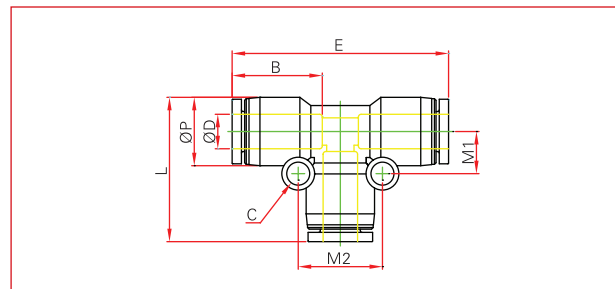
>METRIC SYSTEM

### PUC union straight



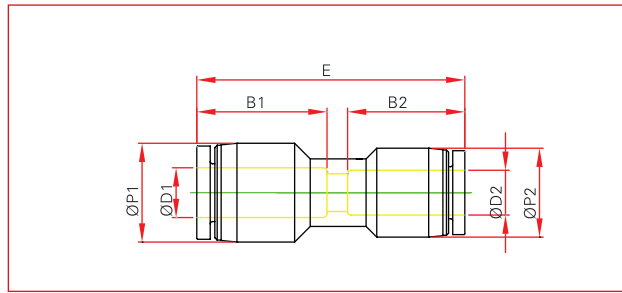
MODEL	ØD	E	C	B	ØP	ORIFICE
PUC-04	4	32.6	3.2	15	11	3
PUC-06	6	35	3.2	15	13	5
PUC-08	8	36.5	3.2	18	14.4	6
PUC-10	10	47.6	4.2	22	18.4	8
PUC-12	12	48.8	4.2	22	21	10
PUC-16	16	64.8	5.2	24	26	13

### PUT union tee



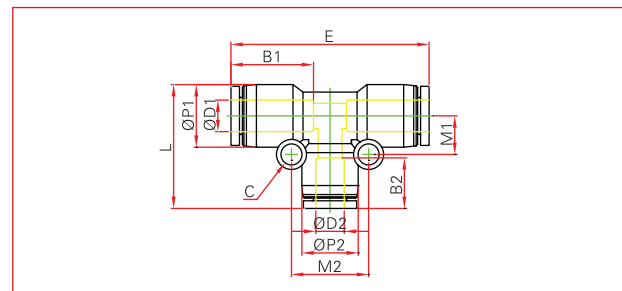
MODEL	ØD	E	L	M1	M2	B	ØP	ORIFICE
PUT-04	4	36.8	24.1	7.2	13.6	15	11	3
PUT-06	6	37.8	25.8	7.8	15.6	15	13	5
PUT-08	8	44.6	29.6	9.1	17.3	18	14.4	6
PUT-10	10	57	37.8	11.8	23.4	22	18.4	8
PUT-12	12	58.6	39.3	14	26.5	22	21	10
PUT-16	16	63.4	44.8	16.5	30.7	24	26	12.5

## PG reducer



MODEL	ØD1	ØD2	E	B1	B2	ORIFICE
PG-0604	4	6	35.2	15	15	3.3
PG-0806	6	8	36.7	15	15	4
PG-1008	8	10	43.4	18	22	5
PG-1210	10	12	45.4	22	22	7
PG-1612	12	16	48.4	22	24	8

## PGT reducer tee

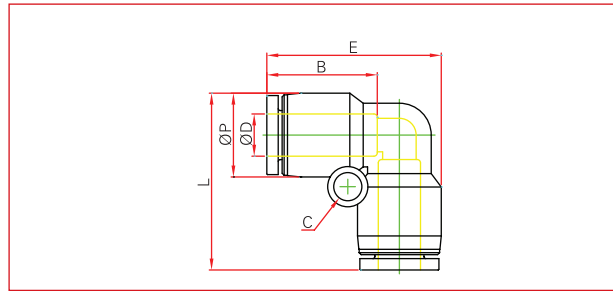


MODEL	ØD1	ØD2	ØP1	ØP2	L	E	C	B1	B2	M1	M2	ORIFICE
PGT-0604	6	4	13	11	25.4	41.6	3.2	15	15	7.9	13.8	3
PGT-0806	8	6	14.4	13	29.4	46.1	3.2	18	15	9.7	17.0	5
PGT-1006	10	6	18.4	13	31.9	49.2	4.2	22	15	10.9	16.8	5
PGT-1008	10	8	18.4	14.4	33.5	49.2	4.2	22	18	10.9	18.8	6
PGT-1208	12	8	21	14.4	35.8	56	4.2	22	18	12.4	18.8	7
PGT-1210	12	10	21	18.4	37.6	56	4.2	22	22	12.4	21.9	8
PGT-1610	16	10	26	18.4	43.1	60.8	5	24	22	15.9	22.8	8
PGT-1612	16	12	26	21	45.5	63.7	5	24	22	15.9	25.8	10

## ONE-TOUCH FITTINGS

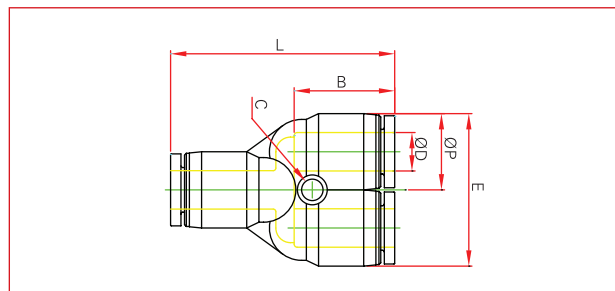
>METRIC SYSTEM

### PUL union elbow



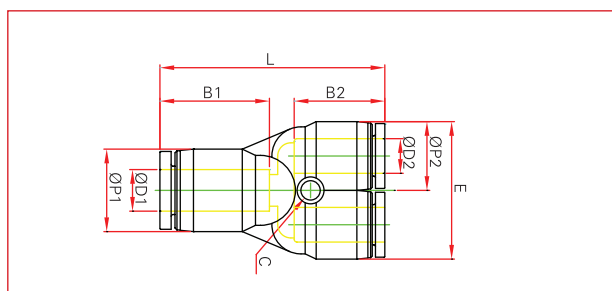
MODEL	ØD	L	B	C	ØP	ORIFICE
PUL-04	4	24	15	3.2	11	3
PUL-06	6	25.5	15	3.2	13	5
PUL-08	8	29.6	18	3.2	14.4	6
PUL-10	10	36.7	22	4.2	18.4	8
PUL-12	12	39.8	22	4.2	21	10
PUL-16	16	45	24	5.2	26	12.5

### PY union y



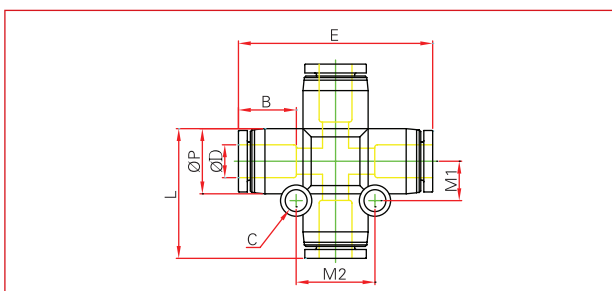
MODEL	ØD	L	E	B	ØP	C	ORIFICE
PY-04	4	35.2	22.2	15	11	3.2	3
PY-06	6	37	26	15	13	3.2	5
PY-08	8	39.4	29.6	18	14.4	3.2	6
PY-10	10	50.2	37.2	22	18.4	4.2	8
PY-12	12	52.6	42.6	22	21	4.2	10
PY-16	16	59.2	51	24	26	5.2	12.5

## PW reducer y



MODEL	ØD1	ØD2	L	E	B1	B2	C	P1	ORIFICE
PW-06-04	6	4	36.5	22.2	15	15	3.2	13	3.3
PW-08-06	8	6	37.2	26	18	15	3.2	14.4	4
PW-10-08	10	8	44.1	29.6	22	18	4.2	18.4	5
PW-12-10	12	10	52.2	37.2	22	22	4.2	21	6.4

## PZA union cross

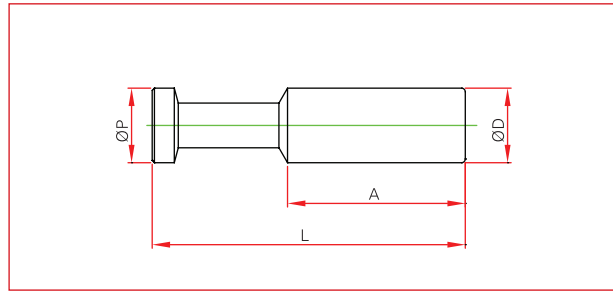
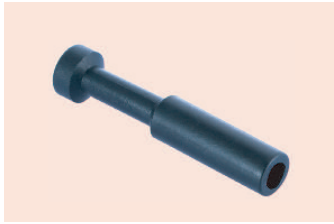


MODEL	ØD	ØP	M1	E	B	ORIFICE
PZA-04	4	11	7.2	35.6	15	3
PZA-06	6	13	7.8	38.2	15	5
PZA-08	8	14.4	9.1	45	18	6
PZA-10	10	18.4	11.8	57.2	22	8
PZA-12	12	21	14	58.6	22	10

## ONE-TOUCH FITTINGS

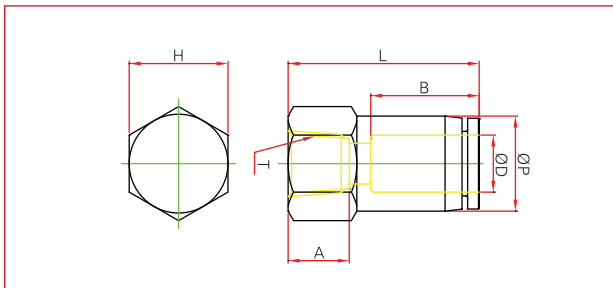
### >METRIC SYSTEM

#### PP plug



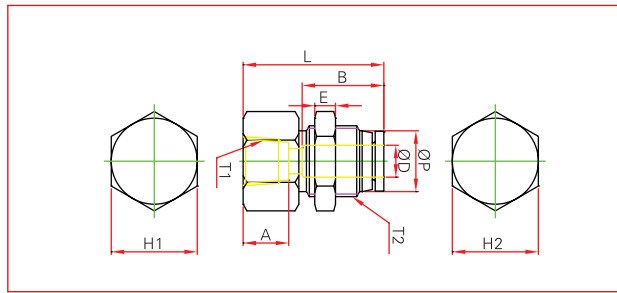
MODEL	ØD	ØP	L	A
PP04	4	4	30.0	17.7
PP06	6	6	34.0	19.4
PP08	8	8	38.0	21.2
PP10	10	10	42.0	23.8
PP12	12	12	46.0	29.5
PP16	16	16	50.0	30.0

#### PCF female straight



MODEL	ØD	T	L	A	B	H	ØP	ORIFICE
PCF-04-01	4	PT1/8	24	8	15	14	10	3
PCF-04-02	4	PT1/4	26.2	10	15	17	10	3
PCF-04-03	4	PT3/8	27.3	11	15	21	10	3
PCF-06-01	6	PT1/8	24.8	8	15	14	12	4.5
PCF-06-02	6	PT1/4	24	10	15	17	12	4.5
PCF-06-03	6	PT3/8	28.4	11	15	21	12	4.5
PCF-08-01	8	PT1/8	28	8	18	14	14	5.8
PCF-08-02	8	PT1/4	28.2	10	18	17	14	8
PCF-08-03	8	PT3/8	29.8	11	18	21	14	8
PCF-08-04	8	PT1/2	31.7	14	18	24	14	8
PCF-10-01	10	PT1/8	28.8	8	22	17	17	8
PCF-10-02	10	PT1/4	32.4	10	22	17	17	8
PCF-10-03	10	PT3/8	33.2	11	22	21	17	8
PCF-10-04	10	PT1/2	35	14	22	24	17	8
PCF-12-02	12	PT1/4	33.5	10	22	21	20	10
PCF-12-03	12	PT3/8	34.5	11	22	21	20	10
PCF-12-04	12	PT1/2	36	14	22	24	20	10

**PMF** bucklehead  
female straight



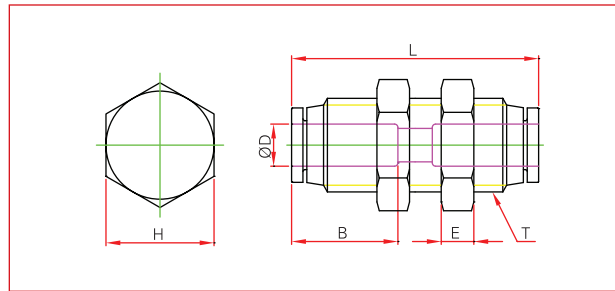
MODEL	ØD	T (Thread)	T2	L	A	H1	H2	B	ORIFICE
PMF-04-01	4	PT1/8	M12×P1.0	23.7	8	14	14	15	2.5
PMF-04-02	4	PT1/4	M12×P1.0	27.0	10	17	14	15	3.0
PMF-06-01	6	PT1/8	M14×P1.0	24.7	8	14	17	15	4.5
PMF-06-02	6	PT1/4	M14×P1.0	27.0	10	17	17	15	4.5
PMF-06-03	6	PT3/8	M14×P1.0	30.8	11	19	17	15	4.5
PMF-08-01	8	PT1/8	M16×P1.0	26.0	8	17	19	18	6.0
PMF-08-02	8	PT1/4	M16×P1.0	29.0	10	17	19	18	6.0
PMF-08-03	8	PT3/8	M16×P1.0	28.8	11	21	19	18	6.5
PMF-08-04	8	PT1/2	M16×P1.0	36.0	14	24	19	18	6.5
PMF-10-01	10	PT1/8	M20×P1.0	30.0	8	21	24	22	7.5
PMF-10-02	10	PT1/4	M20×P1.0	32.6	10	21	24	22	8.0
PMF-10-03	10	PT3/8	M20×P1.0	33.8	11	21	24	22	8.0
PMF-10-04	10	PT1/2	M20×P1.0	38.0	14	24	24	22	8.0
PMF-12-02	12	PT1/4	M22×P1.0	33.6	10	24	27	22	9.0
PMF-12-03	12	PT3/8	M22×P1.0	34.6	11	24	27	22	10
PMF-12-04	12	PT1/2	M22×P1.0	37.0	14	24	27	22	10



## ONE-TOUCH FITTINGS

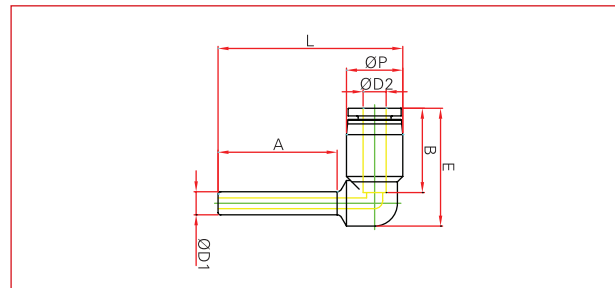
>METRIC SYSTEM

### PMM bucklehead union



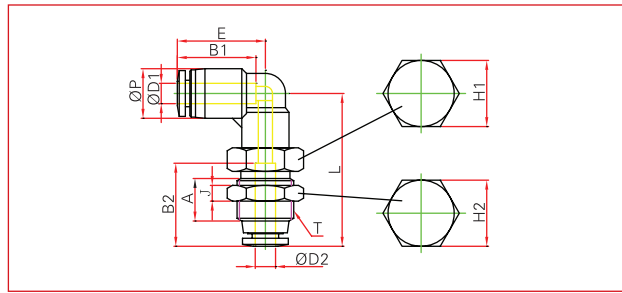
MODEL	ØD	T	L	H	B	ORIFICE
PMM-04	4	M12×P1.0	30	14	15	3
PMM-06	6	M14×P1.0	31.5	17	15	5
PMM-08	8	M16×P1.0	34.5	19	18	6
PMM-10	10	M20×P1.0	41	24	22	8
PMM-12	12	M22×P1.0	44.8	27	22	10

### PLJ plug-in elbow



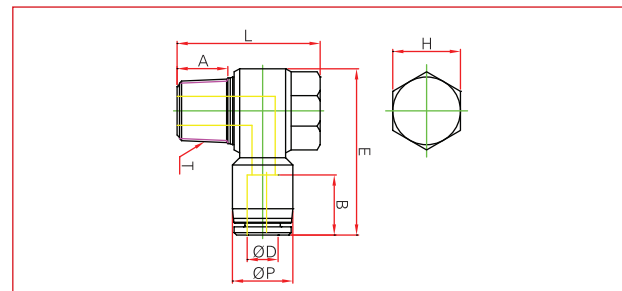
MODEL	ØD2	ØD1	P	E	L	B	ORIFICE
PLJ-04	4	4	11	24	40.5	15	2
PLJ-06	6	6	13	25.2	43.5	15	4
PLJ-08	8	8	14.4	30.5	49	18	6
PLJ-10	10	10	18.4	37.4	57	22	7
PLJ-12	12	12	21	40.4	62	22	9
PLJ-16	16	16	26	46.2	74	24	12
PLJ-0604	6	4	13	25.2	42.5	15	2
PLJ-0806	8	6	14.4	30.5	45.5	15	4
PLJ-1008	10	8	18.4	37.4	51	18	6
PLJ-1210	12	10	21	40.4	59	22	7

**PLM** bucklehead union elbow



MODEL	ØD1	ØD2	ØP	T	L	E	A	B1	B2	J	H1 (hex)	H2 (hex)	ORIFICE
PLM04	4	4	11	M12×P1.0	32.4	18.7	9.0	15	15	4.0	14	14	3.0
PLM06	6	6	13	M14×P1.0	36.2	20.4	11.0	15	15	4.0	17	17	4.5
PLM08	8	8	14.4	M16×P1.0	40.3	23.1	11.5	18	18	5.0	19	19	6.0
PLM10	10	10	18.4	M20×P1.0	42.3	23.7	12.0	22	22	5.0	24	24	7.0
PLM12	12	12	21	M22×P1.0	48.1	27.7	15.0	22	22	5.0	26	26	10.0

**PH** male banjo

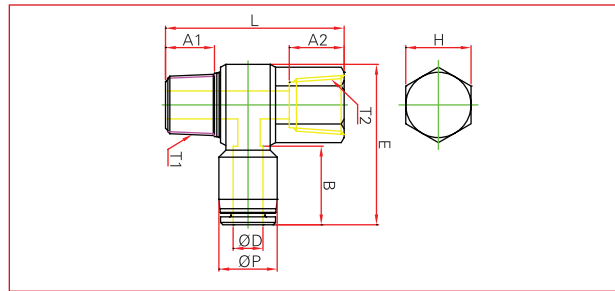


MODEL	ØD	T (Thread)	E	L	A	B	H	ØP	d	ORIFICE
PH-04-01	4	PT1/8	28	24	9	15	12	1 1	6.4	2.5
PH-04-02	4	PT1/4	31.5	27.3	11.6	15	14	11	8.5	2.5
PH-04-M5	4	M5×P0.8	24.8	21.2	4	15	8	11	2.5	2.5
PH-04-M6	4	M6×P1.0	24.8	22.2	5	15	8	11	2.5	2.5
PH-06-01	6	PT1/8	30	24	9	15	12	13	6.4	4
PH-06-02	6	PT1/4	33	27.3	11.6	15	14	13	8.5	4
PH-06-03	6	PT3/8	36.6	32	12.5	15	19	13	11.8	4
PH-06-M5	6	M5×P0.8	26.4	21.2	4	15	8	13	2.5	2.5
PH-06-M6	6	M6×P1.0	26.4	22.2	5	15	8	13	2.5	2.5
PH-08-01	8	PT1/8	30.3	24	9	18	12	14.4	6.4	4
PH-08-02	8	PT1/4	34.4	27.3	11.6	18	14	14.4	8.5	5
PH-08-03	8	PT3/8	39.7	32	12.5	18	19	14.4	11.8	5
PH-08-04	8	PT1/2	42.6	41	15.6	18	24	14.4	13	5
PH-10-01	10	PT1/8	37	24	9	22	12	18.4	6.4	4
PH-10-02	10	PT1/4	36.6	27.3	11.6	22	14	18.4	8.5	5
PH-10-03	10	PT3/8	40.2	32	12.5	22	19	18.4	11.8	8
PH-10-04	10	PT1/2	46	41	15.6	22	24	18.4	13	8
PH-12-02	12	PT1/4	37.5	27.3	11.6	22	14	21	6.5	5
PH-12-03	12	PT3/8	41	32	12.5	22	19	21	11.8	8
PH-12-04	12	PT1/2	48.4	41	15.6	22	24	21	13	10

## ONE-TOUCH FITTINGS

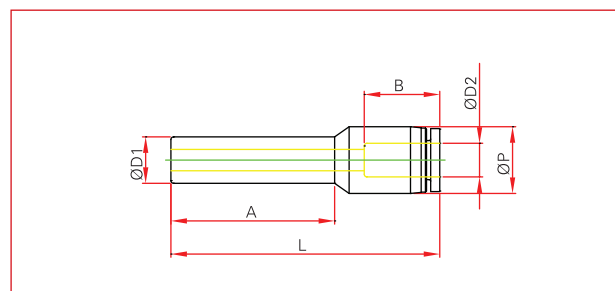
### >METRIC SYSTEM

#### PHF female banjo



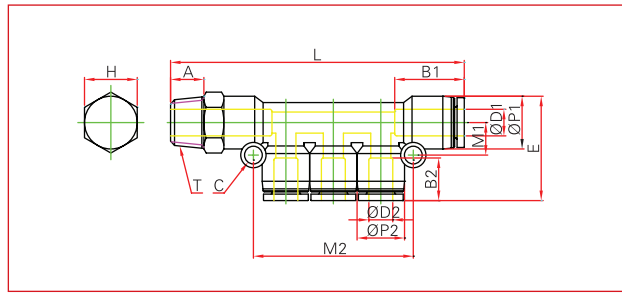
MODEL	ØD	ØP	T1	T2	L	E	A1	A2	B	H(Hex)	ORIFICE
PHF04-M5	4	11	M5×P0.8	M5×P0.8	20.0	25.1	3.6	7.0	15	8	1.5
PHF04-M6	4	11	M6×P1.0	M6×P1.0	25.0	30.5	4.1	7.0	15	11	2.0
PHF04-01	4	11	PT1/8	PT1/8	30.2	30.5	8.0	8.0	15	14	3.0
PHF04-02	4	11	PT1/4	PT1/4	35.5	34.5	10.0	10.0	15	17	3.2
PHF06-M5	6	13	M5×P0.8	M5×P0.8	20.0	27.8	3.6	7.0	15	8	1.5
PHF06-M6	6	13	M6×P1.0	M6×P1.0	25.0	31.2	4.1	7.0	15	11	2.0
PHF06-01	6	13	PT1/8	PT1/8	30.2	31.2	8.0	8.0	15	14	3.0
PHF06-02	6	13	PT1/4	PT1/4	35.5	35.0	10.0	10.0	15	17	4.0
PHF06-03	6	13	PT3/8	PT3/8	41.2	38.7	11.0	11.0	15	21	5.0
PHF06-04	6	13	PT1/2	PT1/2	50.0	44.9	14.0	14.0	15	24	5.0
PHF08-01	8	14.4	PT1/8	PT1/8	30.2	33.0	8.0	8.0	18	14	3.0
PHF08-02	8	14.4	PT1/4	PT1/4	35.5	36.8	10.0	10.0	18	17	4.0
PHF08-03	8	14.4	PT3/8	PT3/8	41.2	40.1	11.0	11.0	18	21	5.0
PHF08-04	8	14.4	PT1/2	PT1/2	50.0	45.8	14.0	14.0	18	24	6.0
PHF10-01	10	18.4	PT1/8	PT1/8	30.2	35.0	8.0	8.0	22	14	3.0
PHF10-02	10	18.4	PT1/4	PT1/4	35.5	38.0	10.0	10.0	22	17	4.0
PHF10-03	10	18.4	PT3/8	PT3/8	41.2	42.2	11.0	11.0	22	21	5.0
PHF10-04	10	18.4	PT1/2	PT1/2	50.0	47.5	14.0	14.0	22	24	6.0
PHF12-02	12	21	PT1/4	PT1/4	35.5	40.8	10.0	10.0	22	17	4.0
PHF12-03	12	21	PT3/8	PT3/8	41.2	45.9	11.0	11.0	22	21	5.0
PHF12-04	12	21	PT1/2	PT1/2	50.0	50.1	14.0	14.0	22	24	6.0

#### PGJ plug-in reducer



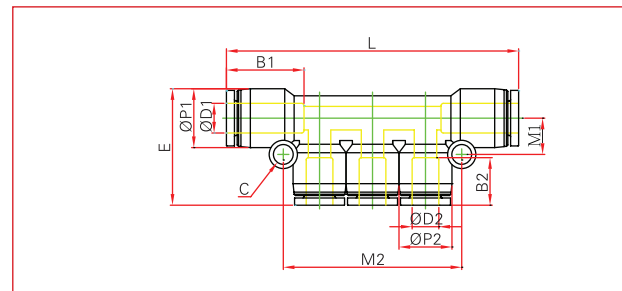
MODEL	ØD2	A	L	ØP	ØD1	B	ORIFICE
PGJ-04-06	4	21.7	36.5	11	6	15	2.8
PGJ-04-08	4	22	37	11	8	15	2.8
PGJ-06-08	6	22.7	41.6	13	8	15	5
PGJ-06-10	6	24.7	43.6	13	10	15	5
PGJ-06-12	6	26.7	45.6	13	12	15	5
PGJ-08-10	8	27.7	46.6	14.4	10	18	7
PGJ-08-10	8	28.7	47.6	14.4	12	18	7
PGJ-10-12	10	30	52	18.4	12	22	9

**PKD** male reducer triple branch



MODEL	ØD1	ØD2	L	B1	B2	ØP1	ØP2	M1	M2	C	A	H	T	ORIFICE
PKD6-6-01	6	4	68	15	13	13	10	8	34	4.2	8	12	1/8	2.6
PKD6-6-02	6	4	70	15	13	13	10	8	34	4.2	10	14	1/4	3.2
PKD8-4-02	8	4	73	15	15	15	10	9	34.4	4.2	10	14	1/4	3.2
PKD8-6-02	8	6	80	15	15	15	13	9	40.6	4.2	10	14	1/4	4
PKD8-6-03	8	6	81.2	15	15	15	13	9	40.6	4.2	11	17	3/8	5
PKD10-8-03	10	8	93	22	18	18	15	10.5	47	4.2	11	17	3/8	5

**PKG** reducer triple branch union

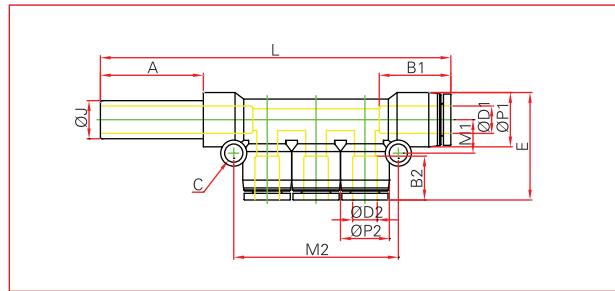


MODEL	ØD1	ØD2	L	B1	B2	ØP1	ØP2	M1	M2	ORIFICE
PKG6-4	6	4	50.5	15	15	13	11	8	34	32
PKG8-4	8	4	53	15	15	14.4	11	9.0	34.4	42
PKG8-6	8	6	80	18	15	14.4	13	9.0	40.6	32
PKG10-6	10	6	80	22	15	18.4	14.4	10.5	42	42
PKG10-8	10	8	70	22	18	18.4	14.4	10.5	47	42

## ONE-TOUCH FITTINGS

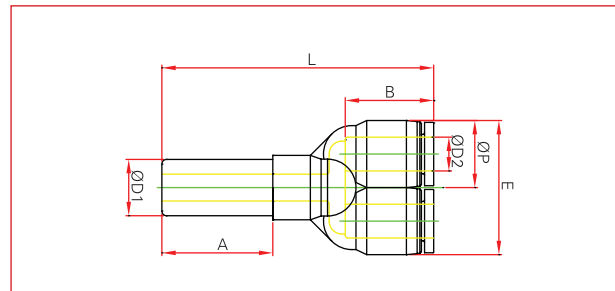
### >METRIC SYSTEM

#### PKJ reducer triple branch union



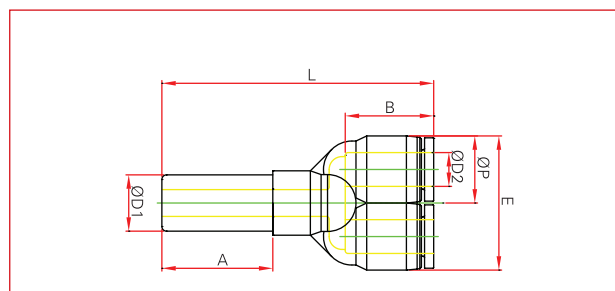
MODEL	ØD1	ØD2	L	B1	B2	M1	M2	ØP1	ØP2	ORIFICE
PKJ6-4	6	4	80	15	15	8	34	13	11	2.6
PKJ8-4	8	4	84	15	15	9	34.4	14.4	10	3.2
PKJ8-6	8	6	91	15	15	9	40.6	14.4	13	3.2
PKJ10-6	10	6	102	18	15	10.5	42	18.4	13	4
PKJ10-8	10	8	104	18	18	10.5	47	18.4	14.4	5

#### PYJ plug-in J



MODEL	ØD1	L	E	B	ØD2	ORIFICE
PYJ-04	4	51.3	22.1	15	4	2
PYJ-06	6	52.9	26	15	6	3
PYJ-08	8	58.2	29.8	18	8	5.5
PYJ-10	10	69	36.8	22	10	7
PYJ-12	12	73.1	42.4	22	12	7.5

#### PWJ plug-in Y

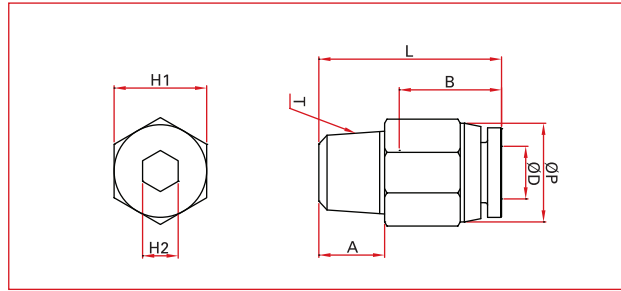


MODEL	ØD2	L	E	B	ØD1	ORIFICE
PWJ0604	4	51.3	22.2	15	6	3
PWJ0806	6	52.9	26	15	8	5
PWJ1008	8	58.2	29.6	18	10	7
PWJ1210	10	69	37.2	22	12	7.5

## ONE-TOUCH FITTINGS

### > INCH SYSTEM

#### PC male straight

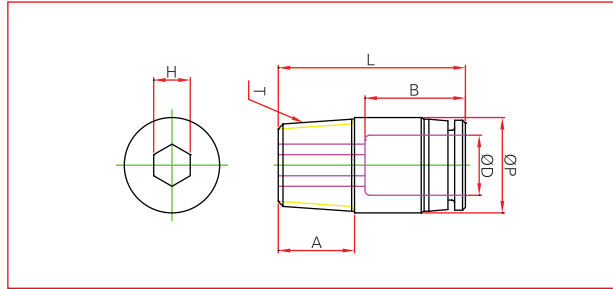


MODEL	ØD	ØP	T (Thread)	L	A	B	H1	H2	ORIFICE
PC-5/32-UNF	5/32	10.5	UNF10/32	21.4	3.6	15	7/16	3/32	2.5
PC-5/32-N01	5/32	10.5	NPT1/8	19.5	8.5	15	7/16	3/32	3.2
PC-5/32-N02	5/32	10.5	NPT1/4	22.0	10.5	15	9/16	1/8	3.2
PC-5/32-N02	5/32	10.5	NPT3/8	23.0	11.5	15	11/16	1/8	3.2
PC-3/16-UNF	3/16	11.0	UNF10/32	22.0	3.6	15	7/16	3/32	2.5
PC-3/16-N01	3/16	11.0	NPT1/8	23.1	8.5	15	7/16	1/8	3.2
PC-3/16-N02	3/16	11.0	NPT1/4	23.1	10.5	15	9/16	1/8	3.2
PC-3/16-N03	3/16	11.0	NPT3/8	24.1	11.5	15	11/16	1/8	3.2
PC-1/4-UNF	1/4	12.7	UNF10/32	23.2	3.6	15	1/2	3/32	2.5
PC-1/4-N01	1/4	12.7	NPT1/8	23.8	8.5	15	1/2	3/16	4.0
PC-1/4-N02	1/4	12.7	NPT1/4	23.2	10.5	15	9/16	3/16	4.0
PC-1/4-N03	1/4	12.7	NPT3/8	24.2	11.5	15	11/16	3/16	4.0
PC-1/4-N04	1/4	12.7	NPT1/2	27.3	14.5	15	7/8	3/16	4.0
PC-5/16-N01	5/16	14.0	NPT1/8	28.2	8.5	18	9/16	3/16	4.8
PC-5/16-N02	5/16	14.0	NPT1/4	26.0	10.5	18	9/16	1/4	6.4
PC-5/16-N03	5/16	14.0	NPT3/8	26.5	11.5	18	11/16	1/4	6.4
PC-5/16-N04	5/16	14.0	NPT1/2	24.5	14.5	18	7/8	1/4	6.4
PC-3/8-N01	3/8	16.7	NPT1/8	30.1	8.5	22	11/16	3/16	4.8
PC-3/8-N02	3/8	16.7	NPT1/4	31.1	10.5	22	11/16	1/4	6.4
PC-3/8-N03	3/8	16.7	NPT3/8	24.8	11.5	22	11/16	5/16	7.9
PC-3/8-N04	3/8	16.7	NPT1/2	24.0	14.5	22	7/8	5/16	7.9
PC-1/2-N01	1/2	20.6	NPT1/8	33.4	8.5	22	7/8	3/16	4.8
PC-1/2-N02	1/2	20.6	NPT1/4	35.4	10.5	22	7/8	1/4	6.4
PC-1/2-N03	1/2	20.6	NPT3/8	31.9	11.5	22	7/8	3/8	9.5
PC-1/2-N04	1/2	20.6	NPT1/2	31.4	14.5	22	7/8	3/8	9.5

## ONE-TOUCH FITTINGS

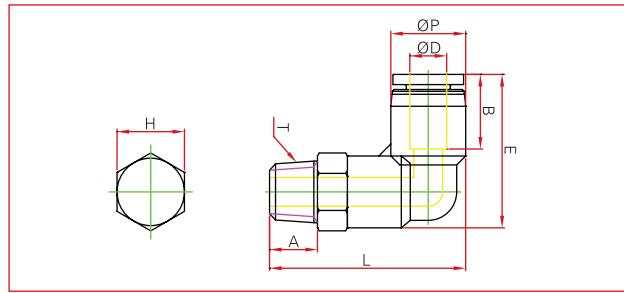
### > INCH SYSTEM

#### POC Round male straight



MODEL	ØD	ØP	T (Thread)	L	A	B	H	ORIFICE
POC-5/32-UNF	5/32	11.0	UNF10/32	20.8	3.5	15	3/32	2.4
POC-5/32-N01	5/32	11.0	NPT1/8	21.0	8.5	15	1/8	3.2
POC-5/32-N02	5/32	14.0	NPT1/4	22.0	10.5	15	1/8	3.2
POC-3/16-UNF	3/16	11.0	UNF10/32	22.4	3.5	15	3/32	2.4
POC-3/16-N01	3/16	12.0	NPT1/8	22.7	8.5	15	1/8	3.2
POC-3/16-N02	3/16	14.0	NPT1/4	23.7	10.5	15	1/8	3.2
POC-1/4-UNF	1/4	13.0	UNF10/32	22.9	3.5	15	3/32	2.4
POC-1/4-N01	1/4	13.0	NPT1/8	23.6	8.5	15	3/16	4.8
POC-1/4-N02	1/4	14.0	NPT1/4	23.8	10.5	15	3/16	4.8
POC-5/16-N01	5/16	14.0	NPT1/8	27.5	8.5	18	3/16	4.8
POC-5/16-N02	5/16	14.0	NPT1/4	25.5	10.5	18	1/4	6.4
POC-5/16-N03	5/16	18.0	NPT3/8	25.5	11.5	18	1/4	6.4
POC-3/8-N01	3/8	18.0	NPT1/8	28.2	8.5	22	3/16	4.8
POC-3/8-N02	3/8	18.0	NPT1/4	28.2	10.5	22	1/4	6.4
POC-3/8-N03	3/8	18.0	NPT3/8	28.2	11.5	22	5/16	8.0
POC-3/8-N04	3/8	22.0	NPT1/2	29.2	14.5	22	5/16	8.0
POC-1/2-N02	1/2	21.0	NPT1/4	35.4	10.5	22	1/4	6.4
POC-1/2-N03	1/2	21.0	NPT3/8	32.9	11.5	22	3/8	9.5
POC-1/2-N04	1/2	22.0	NPT1/2	33.0	14.5	22	3/8	9.5

## PL male elbow



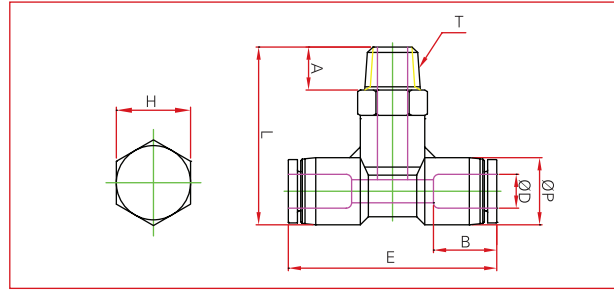
MODEL	ØD	ØP	T (Thread)	L	E	A	B	H	ORIFICE
PL-5/32-UNF	5/32	11	UNF10/32	26.7	23.7	3.6	15	7/16	2.5
PL-5/32-N01	5/32	11	NPT1/8	30.3	23.7	8.5	15	7/16	3.3
PL-5/32-N02	5/32	11	NPT1/4	33.3	23.7	10.5	15	9/16	3.3
PL-3/16-UNF	3/16	13	UNF10/32	27.2	24.2	3.6	15	7/16	3.3
PL-3/16-N01	3/16	13	NPT1/8	30.8	24.2	8.5	15	7/16	3.3
PL-3/16-N02	3/16	13	NPT1/4	33.8	24.2	10.5	15	9/16	3.3
PL-3/16-N03	3/16	13	NPT3/8	34.8	24.2	11.5	15	11/16	3.3
PL-1/4-UNF	1/4	13	UNF10/32	32.4	26.5	3.6	15	1/2	2.5
PL-1/4-N01	1/4	13	NPT1/8	34.3	26.5	8.5	15	1/2	4.5
PL-1/4-N02	1/4	13	NPT1/4	37	26.5	10.5	15	9/16	4.5
PL-1/4-N03	1/4	13	NPT3/8	38	26.5	11.5	15	11/16	4.5
PL-5/16-N01	5/16	14.4	NPT1/8	36.7	30.1	8.5	18	9/16	6.6
PL-5/16-N02	5/16	14.4	NPT1/4	38.7	30.1	10.5	18	9/16	6.6
PL-5/16-N03	5/16	14.4	NPT3/8	39.7	30.1	11.5	18	11/16	6.6
PL-5/16-N04	5/16	14.4	NPT1/2	42.7	30.1	14.5	18	7/8	6.6
PL-3/8-N01	3/8	18.4	NPT1/8	38.8	32.3	8.5	22	11/16	5.5
PL-3/8-N02	3/8	18.4	NPT1/4	40.8	32.3	10.5	22	11/16	7.7
PL-3/8-N03	3/8	18.4	NPT3/8	41.8	32.3	11.5	22	11/16	7.7
PL-3/8-N04	3/8	18.4	NPT1/2	44.8	32.3	14.5	22	7/8	7.7
PL-1/2-N02	1/2	21	NPT1/4	46	37.8	10.5	22	3/4	8.8
PL-1/2-N03	1/2	21	NPT3/8	47	37.8	11.5	22	3/4	9.9
PL-1/2-N04	1/2	21	NPT1/2	50	37.8	14.5	22	7/8	9.9



## ONE-TOUCH FITTINGS

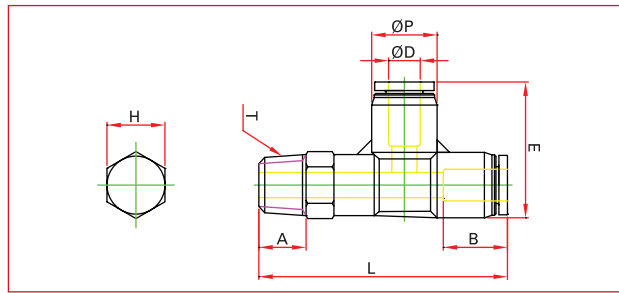
### > INCH SYSTEM

#### PT male branch tee



MODEL	ØD	ØP	T (Thread)	L	E	A	B	H	ORIFICE
PT-5/32-UNF	5/32	11	UNF10/32	26.7	37.0	3.6	15	7/16	2.5
PT-5/32-N01	5/32	11	NPT1/8	30.3	37.0	8.5	15	7/16	3
PT-5/32-N02	5/32	11	NPT1/4	33.3	37.0	10.5	15	9/16	3
PT-3/16-UNF	3/16	13	UNF10/32	27.2	38.2	3.6	15	7/16	2
PT-3/16-N01	3/16	13	NPT1/8	30.8	38.2	8.5	15	7/16	3
PT-3/16-N02	3/16	13	NPT1/4	33.8	38.2	10.5	15	9/16	3
PT-3/16-N03	3/16	13	NPT3/8	34.8	38.2	11.5	15	11/16	3
PT-1/4-UNF	1/4	13	UNF10/32	32.4	40.8	3.6	15	1/2	2.5
PT-1/4-N01	1/4	13	NPT1/8	34.3	40.8	8.5	15	1/2	4.5
PT-1/4-N02	1/4	13	NPT1/4	37	40.8	10.5	15	9/16	4.5
PT-1/4-N03	1/4	13	NPT3/8	38	40.8	11.5	15	11/16	4.5
PT-5/16-N01	5/16	14.4	NPT1/8	36.7	43.7	8.5	18	9/16	6
PT-5/16-N02	5/16	14.4	NPT1/4	38.7	43.7	10.5	18	9/16	6
PT-5/16-N03	5/16	14.4	NPT3/8	39.7	43.7	11.5	18	11/16	6
PT-5/16-N04	5/16	14.4	NPT1/2	42.7	43.7	14.5	18	7/8	6
PT-3/8-N01	3/8	18.4	NPT1/8	38.8	47.7	8.5	22	11/16	5
PT-3/8-N02	3/8	18.4	NPT1/4	40.8	47.7	10.5	22	11/16	7
PT-3/8-N03	3/8	18.4	NPT3/8	41.8	47.7	11.5	22	11/16	7
PT-3/8-N04	3/8	18.4	NPT1/2	44.8	47.7	14.5	22	7/8	7
PT-1/2-N02	1/2	21	NPT1/4	46	56.5	10.5	22	3/4	8
PT-1/2-N03	1/2	21	NPT3/8	47	56.5	11.5	22	3/4	9
PT-1/2-N04	1/2	21	NPT1/2	50	56.5	14.5	22	7/8	9

## PST male run tee

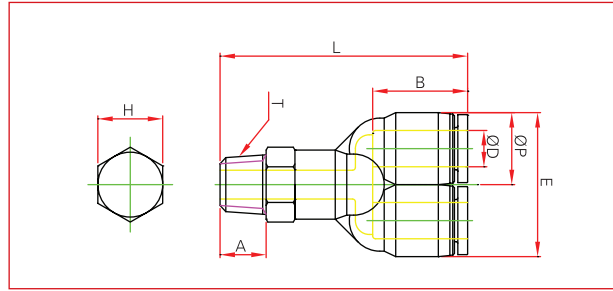


MODEL	ØD	ØP	T (Thread)	L	E	A	B	H	ORIFICE
PST-5/32-UNF	5/32	11	UNF10/32	42.1	25.0	3.6	15	7/16	2.5
PST-5/32-N01	5/32	11	NPT1/8	45.7	25.0	8.5	15	7/16	3
PST-5/32-N02	5/32	11	NPT1/4	48.7	25.0	10.5	15	9/16	3
PST-3/16-UNF	3/16	13	UNF10/32	41.5	25.1	3.6	15	7/16	3
PST-3/16-N01	3/16	13	NPT1/8	45.1	25.1	8.5	15	7/16	3
PST-3/16-N02	3/16	13	NPT1/4	48.1	25.1	10.5	15	9/16	3
PST-3/16-N03	3/16	13	NPT3/8	49.1	25.1	11.5	15	11/16	3
PST-1/4-UNF	1/4	13	UNF10/32	47.4	28.0	3.6	15	1/2	2.5
PST-1/4-N01	1/4	13	NPT1/8	49.3	28.0	8.5	15	1/2	4.5
PST-1/4-N02	1/4	13	NPT1/4	52.0	28.0	10.5	15	9/16	4.5
PST-1/4-N03	1/4	13	NPT3/8	53.0	28.0	11.5	15	11/16	4.5
PST-5/16-N01	5/16	14.4	NPT1/8	53.7	30.9	8.5	18	9/16	6
PST-5/16-N02	5/16	14.4	NPT1/4	55.7	30.9	10.5	18	9/16	6
PST-5/16-N03	5/16	14.4	NPT3/8	56.7	30.9	11.5	18	11/16	6
PST-5/16-N04	5/16	14.4	NPT1/2	59.7	30.9	14.5	18	7/8	6
PST-3/8-N01	3/8	18.4	NPT1/8	63.3	34.7	8.5	22	11/16	5
PST-3/8-N02	3/8	18.4	NPT1/4	65.3	34.7	10.5	22	11/16	7
PST-3/8-N03	3/8	18.4	NPT3/8	66.3	34.7	11.5	22	11/16	7
PST-3/8-N04	3/8	18.4	NPT1/2	69.3	34.7	14.5	22	7/8	7
PST-1/2-N02	1/2	21	NPT1/4	57.3	40.8	10.5	22	3/4	8
PST-1/2-N03	1/2	21	NPT3/8	58.3	40.8	11.5	22	3/4	10
PST-1/2-N04	1/2	21	NPT1/2	61.3	40.8	14.5	22	7/8	10

## ONE-TOUCH FITTINGS

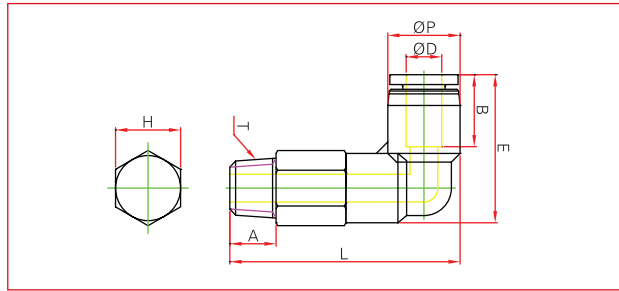
> INCH SYSTEM

### PWT male Y



MODEL	ØD	ØP	T (Thread)	L	E	A	B	H	ORIFICE
PWT-5/32-UNF	5/32	11	UNF10/32	38.8	21.1	3.6	15	7/16	2.5
PWT-5/32-N01	5/32	11	NPT1/8	41.7	21.1	8.5	15	7/16	3
PWT-5/32-N02	5/32	11	NPT1/4	44.7	21.1	10.5	15	9/16	3
PWT-3/16-UNF	3/16	13	UNF10/32	41.8	26	3.6	15	7/16	3
PWT-3/16-N01	3/16	13	NPT1/8	45.4	26	8.5	15	7/16	3
PWT-3/16-N02	3/16	13	NPT1/4	48.4	26	10.5	15	9/16	3
PWT-3/16-N03	3/16	13	NPT3/8	49.4	26	11.5	15	11/16	3
PWT-1/4-UNF	1/4	13	UNF10/32	45.8	26	3.6	15	1/2	2.5
PWT-1/4-N01	1/4	13	NPT1/8	47.7	26	8.5	15	1/2	4.5
PWT-1/4-N02	1/4	13	NPT1/4	50.4	26	10.5	15	9/16	4.5
PWT-1/4-N03	1/4	13	NPT3/8	51.4	26	11.5	15	11/16	4.5
PWT-5/16-N01	5/16	14.4	NPT1/8	47.0	29.8	8.5	18	9/16	6
PWT-5/16-N02	5/16	14.4	NPT1/4	49.0	29.8	10.5	18	9/16	6
PWT-5/16-N03	5/16	14.4	NPT3/8	50.0	29.8	11.5	18	11/16	6
PWT-5/16-N04	5/16	14.4	NPT1/2	53.0	29.8	14.5	18	7/8	6
PWT-3/8-N01	3/8	18.4	NPT1/8	52.7	36.8	8.5	22	11/16	5
PWT-3/8-N02	3/8	18.4	NPT1/4	54.7	36.8	10.5	22	11/16	7
PWT-3/8-N03	3/8	18.4	NPT3/8	55.7	36.8	11.5	22	11/16	7
PWT-3/8-N04	3/8	18.4	NPT1/2	58.7	36.8	14.5	22	7/8	7
PWT-1/2-N02	1/2	21	NPT1/4	64.6	42.4	10.5	22	7/8	7
PWT-1/2-N03	1/2	21	NPT3/8	65.6	42.4	11.5	22	7/8	7
PWT-1/2-N04	1/2	21	NPT1/2	68.6	42.4	14.5	22	7/8	7

**PLL** extended male elbow

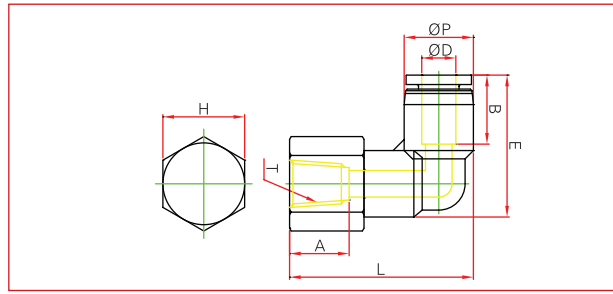


MODEL	ØD	ØP	T (Thread)	L	E	A	B	H	ORIFICE
PLL-5/32-UNF	5/32	11	UNF10/32	32.5	24	3.6	15	7/16	2
PLL-5/32-N01	5/32	11	NPT1/8	35.5	24	78.5	15	7/16	3
PLL-5/32-N02	5/32	11	NPT1/4	38.5	24	10.5	15	9/16	3
PLL-3/16-UNF	3/16	13	UNF10/32	32.5	25.2	3.6	15	7/16	3
PLL-3/16-N01	3/16	13	NPT1/8	35.5	25.2	8.5	15	7/16	3
PLL-3/16-N02	3/16	13	NPT1/4	38.5	25.2	10.5	15	9/16	3
PLL-3/16-N03	3/16	13	NPT3/8	38.5	25.2	11.5	15	11/16	3
PLL-1/4-UNF	1/4	13	UNF10/32	37.5	25.2	3.6	15	1/2	2
PLL-1/4-N01	1/4	13	NPT1/8	41.3	25.2	8.5	15	1/2	4.5
PLL-1/4-N02	1/4	13	NPT1/4	44.0	25.2	10.5	15	9/16	4.5
PLL-1/4-N03	1/4	13	NPT3/8	45.0	25.2	11.5	15	11/16	4.5
PLL-5/16-N01	5/16	14.4	NPT1/8	44.4	30.5	8.5	18	69/16	6
PLL-5/16-N02	5/16	14.4	NPT1/4	46.4	30.5	10.5	18	6/16	6
PLL-5/16-N03	5/16	14.4	NPT3/8	50.4	30.5	11.5	18	11/16	6
PLL-3/8-N02	3/8	18.4	NPT1/4	50.0	37.4	10.5	22	11/16	7
PLL-3/8-N03	3/8	18.4	NPT3/8	51.0	37.4	11.5	22	11/16	7
PLL-3/8-N04	3/8	18.4	NPT1/2	54.0	37.4	14.5	22	7/8	7
PLL-1/2-N02	1/2	21	NPT1/4	57.5	40.4	10.5	22	3/4	8
PLL-1/2-N03	1/2	21	NPT3/8	58.5	40.4	14.5	22	3/7	9
PLL-1/2-N04	1/2	21	NPT1/2	61.5	40.4	14.5	22	7/8	9

## ONE-TOUCH FITTINGS

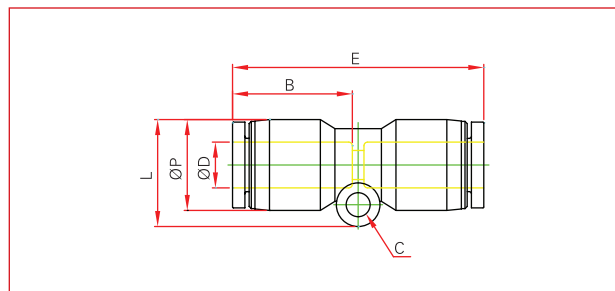
### > INCH SYSTEM

#### PLF extended female elbow



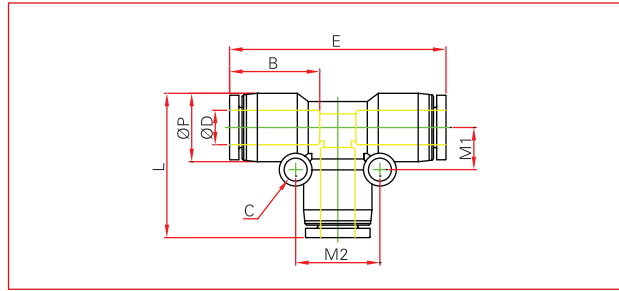
MODEL	ØD	ØP	Thread	L	E	A	B	H	ORIFICE
PLF5/32-UNF	5/32	11	UNF 10/32	21.5	24	7.0	15	7/16	2.5
PLF5/32-N01	5/32	11	NPT 1/8	22.5	24	8.5	15	9/16	2.5
PLF5/32-N02	5/32	11	NPT 1/4	22.5	24	10.5	15	11/16	2.5
PLF3/16-UNF	3/16	13	UNF 10/32	20.5	25.2	7.0	15	7/16	2.5
PLF3/16-N01	3/16	13	NPT 1/8	22.5	25.2	8.5	15	9/16	2.5
PLF3/16-N02	3/16	13	UNF 1/4	25.5	25.2	10.5	15	11/16	2.5
PLF1/4-UNF	1/4	13	UNF 10/32	21	25.2	7.0	15	1/2	3
PLF1/4-N01	1/4	13	NPT 1/8	25	25.2	8.5	15	9/16	4
PLF1/4-N02	1/4	13	NPT 1/4	27	25.2	10.0	15	11/16	4
PLF1/4-N03	1/4	13	NPT 3/8	26	25.2	11.5	15	7/8	4
PLF5/16-N01	5/16	14.4	NPT 1/8	25.9	30.5	8.5	16	9/16	6
PLF5/16-N02	5/16	14.4	NPT 1/4	27.9	30.5	10.5	16	11/16	6
PLF5/16-N03	5/16	14.4	NPT 3/8	28.9	30.5	11.5	16	7/8	6
PLF3/8-N02	3/8	18.4	NPT 1/4	28.5	37.4	10.5	22	11/16	7
PLF3/8-N03	3/8	18.4	NPT 3/8	29.5	37.4	11.5	22	7/8	7
PLF3/8-N04	3/8	18.4	NPT 1/2	33	37.4	14.5	22	15/16	7
PLF1/2-N03	1/2	21	NPT 3/8	33	40.4	11.5	22	7/8	9
PLF1/2-N04	1/2	21	NPT 1/2	36.5	40.4	14.5	22	15/16	9

#### PUC union straight



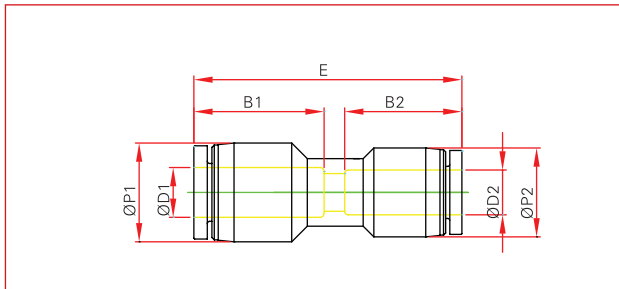
MODEL	ØD	ØP	L	E	C	B	ORIFICE
PUC-5/32	5/32	11	12.8	32.6	3.2	15	3
PUC-3/16	3/16	13	15.1	35	3.2	15	5
PUC-1/4	1/4	13	16.3	35	3.2	15	5
PUC-5/16	5/16	14.4	19.9	38.6	3.2	18	6
PUC-3/8	3/8	18.4	21.5	47.6	4.2	22	8
PUC-1/2	1/2	21	24.5	48.8	4.2	22	10

## PUT union tee



MODEL	ØD	ØP	E	L	C	B	M1	M2	ORIFICE
PUT-5/32	5/32	11	36.8	24.1	3.2	15	7.2	13.6	3
PUT-3/16	3/16	13	37.8	25.8	3.2	15	7.8	15.6	5
PUT-1/4	1/4	13	37.8	25.8	3.2	15	7.8	15.6	5
PUT-5/16	5/16	14.4	44.6	29.6	3.2	18	8.1	17.3	6
PUT-3/8	3/8	18.4	57	37.8	4.2	22	11.8	23.4	8
PUT-1/2	1/2	21	58.6	39.3	4.2	22	14	26.5	10

## PG reducer

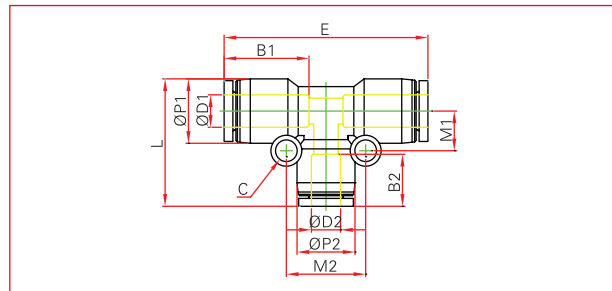


MODEL	ØD1	ØD2	ØP1	ØP2	E	B1	B2	ORIFICE
PG-3/16-5/32	3/16	5/32	11	11	35.0	15	15	3.3
PG-1/4-5/32	1/4	5/32	13	11	35.6	15	15	3.3
PG-1/4-3/16	1/4	3/16	13	11	38.2	15	15	4.0
PG-5/16-5/32	5/16	5/32	14.4	11	38.7	18	15	3.7
PG-5/16-1/4	5/16	1/4	14.4	13	38.1	18	15	5.0
PG-3/8-1/4	3/8	1/4	18.4	13	39.7	22	15	5.0
PG-3/8-5/16	3/8	5/16	18.4	14.4	41.0	22	18	7.0
PG-1/2-3/8	1/2	3/8	22	18.4	45.3	22	22	8.0

## ONE-TOUCH FITTINGS

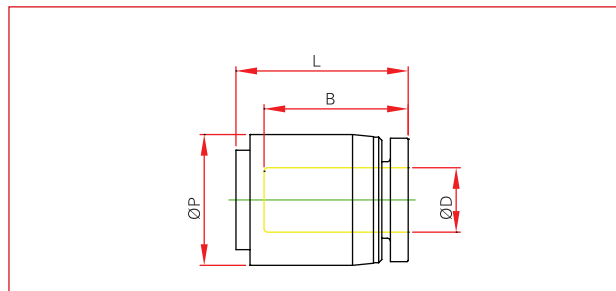
> INCH SYSTEM

### PGT reducer tee



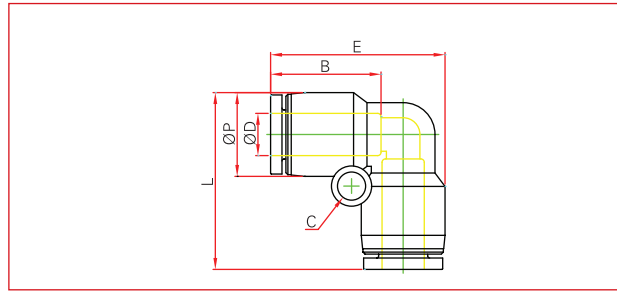
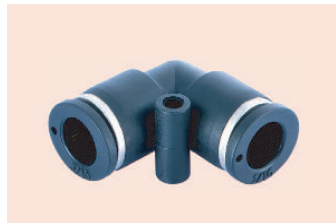
MODEL	ØD1	ØD2	ØP1	ØP2	L	E	C	B1	B2	M1	M2	ORIFICE
PGT 1/4-5/32	1/4	5/32	13	11	26.6	40.5	4.3	15	15	8.3	14.5	3.2
PGT 5/16-1/4	5/16	1/4	14.4	13	28.4	43.2	4.5	18	15	9.7	17.5	5.0
PGT 3/8-1/4	3/8	1/4	18.4	13	32.2	48.6	4.5	22	15	11.0	17.5	5.0
PGT 3/8-5/16	3/8	5/16	18.4	14.4	33.5	50.6	4.5	22	18	10.9	18.8	6.5
PGT 1/2-3/8	1/2	3/8	21	18.4	36.8	58.5	4.5	22	22	12.8	22.0	8.0

### PPF cap



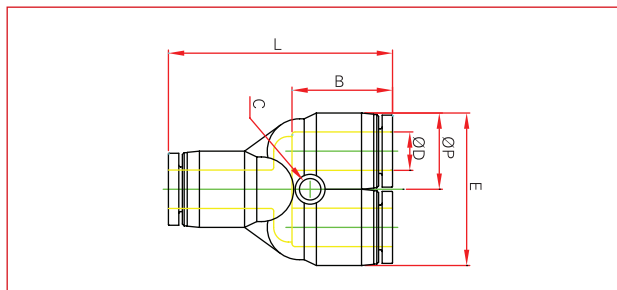
MODEL	ØD	ØP	L	B
PPF 5/32	5/32	11	18	16.3
PPF 3/16	3/16	13	19	16.8
PPF 1/4	1/4	13	19	17.4
PPF 5/16	5/16	14.4	21	18.7
PPF 3/8	3/8	18.4	23	20.2
PPF 1/2	1/2	21	25	22.0

## PUL union elbow



MODEL	ØD	ØP	L	C	B	ORIFICE
PUL-5/32	5/32	11	24	3.2	15	3
PUL-3/16	3/16	13	25.5	3.2	15	5
PUL-1/4	1/4	13	25.5	3.2	15	5
PUL-5/16	5/16	14.4	29.6	3.2	18	6
PUL-3/8	3/8	18.4	36.7	4.2	22	8
PUL-1/2	1/2	21	39.8	4.2	22	10

## PY union Y



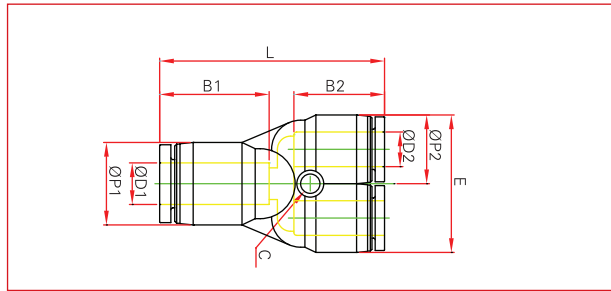
MODEL	ØD	ØP	L	E	C	B	ORIFICE
PY-5/32	5/32	11	35.2	22.2	3.2	3.2	3
PY-3/16	3/16	13	37	26	3.2	3.2	5
PY-1/4	1/4	13	37	26	3.2	3.2	5
PY-5/16	5/16	14.4	39.4	29.6	3.2	3.2	6
PY-3/8	3/8	18.4	50.2	37.2	4.2	4.2	8
PY-1/2	1/2	21	52.6	42.6	4.2	4.2	10



## ONE-TOUCH FITTINGS

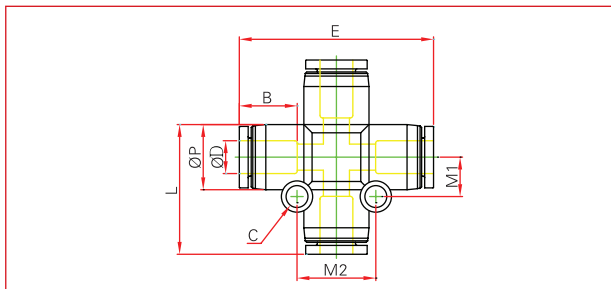
> INCH SYSTEM

### PW reducer Y



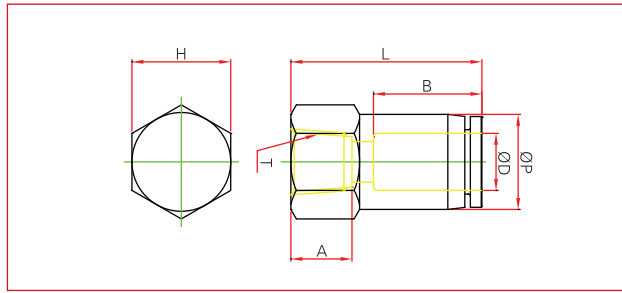
MODEL	ØD1	ØD2	ØP1	L	E	C	B1	B2	ORIFICE
PW-3/16-5/32	3/16	5/32	13	36.5	22.2	3.2	15	15	3.3
PW-1/4-5/32	1/4	5/32	13	36.5	22.2	3.2	15	15	3.3
PW-1/4-3/16	1/4	3/16	14.4	37.	26	3.2	15	15	4.0
PW-5/16-5/32	5/16	5/32	14.4	37.9	22.2	3.2	18	15	3.7
PW5/16-1/4	5/16	1/4	14.4	40	26	3.3	18	15	5.0
PW-3/8-1/4	3/8	1/4	18.4	42	26	3.2	22	15	5.0
PW-3/8-5/16	3/8	5/16	18.4	44.1	29.6	4.2	22	18	7.0
PW-1/2-5/16	1/2	5/16	21	50	29.6	3.2	22	18	6.4
PW-1/2-3/8	1/2	3/8	21	52.2	37.2	4.2	22	22	7.0

### PZA union cross



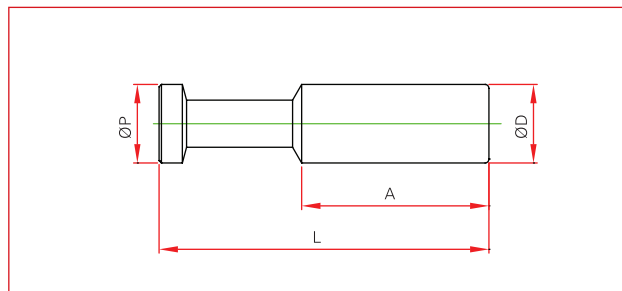
MODEL	ØD	ØP	L	E	C	B	M1	M2	ORIFICE
PZA-5/32	5/32	11	35.6	35.6	3.2	15	7.2	12.8	3
PZA-3/16	3/16	13	38.2	38.2	3.2	15	7.8	15.0	5
PZA-1/4	1/4	13	38.2	38.2	3.2	15	7.8	16.5	5
PZA-5/16	5/16	14.4	45	45	3.2	18	9.4	18.2	6
PZA-3/8	3/8	18.4	57.2	57.2	4.2	22	11.8	20.3	8
PZA-1/2	1/2	21	58.6	58.6	4.2	22	14	25.5	10

## PCF female straight



MODEL	ØD	ØP	T	L	A	B	H	ORIFICE
PCF-5/32-N01	5/32	10	NPT1/8	27.6	8.5	15	9/16	3.5
PCF-5/32-N02	5/32	10	NPT1/4	29.6	10.5	15	11/16	3.5
PCF-3/16-N01	3/16	12	NPT1/8	28.2	8.5	15	9/16	4.0
PCF-3/16-N02	3/16	12	NPT1/4	30.2	10.5	15	11/16	4.0
PCF-1/4-N01	1/4	12	NPT1/8	28.7	8.5	15	9/16	5.0
PCF-1/4-N02	1/4	12	NPT1/4	30.7	10.5	15	11/16	5.0
PCF-1/4-N03	1/4	12	NPT3/8	32.7	11.5	15	7/8	5.0
PCF-5/16-N01	5/16	14	NPT1/8	29.0	8.5	18	9/16	6.0
PCF-5/16-N02	5/16	14	NPT1/4	31.0	10.5	18	11/16	6.0
PCF-5/16-N03	5/16	14	NPT3/8	32.0	11.5	18	7/8	6.0
PCF-5/16-N04	5/16	14	NPT1/2	35.9	14.5	18	15/16	6.0
PCF-3/8-N01	3/8	17	NPT1/8	31.8	8.5	22	9/16	8.0
PCF-3/8-N02	3/8	17	NPT1/4	32.8	10.5	22	11/18	8.0
PCF-3/8-N03	3/8	17	NPT3/8	34.1	11.5	22	7/8	8.0
PCF-3/8-N04	3/8	17	NPT1/2	37.8	14.5	22	15/16	8.0
PCF-1/2-N02	1/2	20	NPT1/4	36.2	10.5	22	7/8	10.0
PCF-1/2-N03	1/2	20	NPT3/8	37.6	11.5	22	7/8	10.0

## PP plug

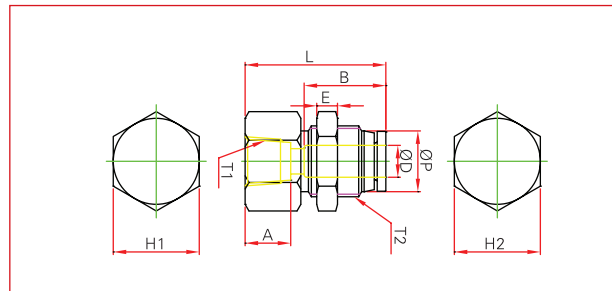


MODEL	ØD	ØP	L	A
PP5/32	5/32	5/32	30.0	18
PP3/16	3/16	3/16	33.0	19
PP1/4	1/4	1/4	34.0	20
PP5/16	5/16	5/16	38.0	22
PP3/8	3/8	3/8	42.0	25
PP1/2	1/2	1/2	46.0	28

## ONE-TOUCH FITTINGS

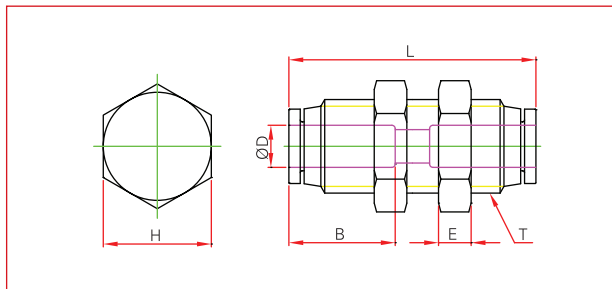
### > INCH SYSTEM

#### PMF bucklehead female straight



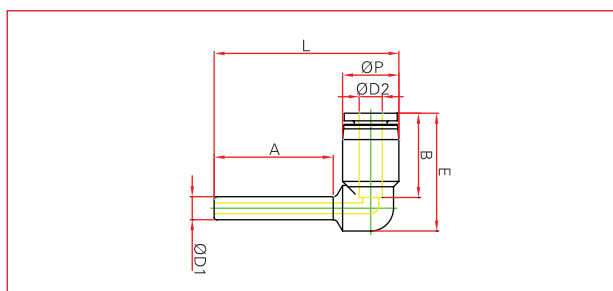
MODEL	ØD	ØP	T1	T2	L	E	A	B	H1	H2	ORIFICE
PMF-5/32-N01	5/32	10	NPT1/8	M12×P1.0	27.1	4	8.5	15	9/16	14	3
PMF-3/16-N01	3/16	12	NPT1/8	M12×P1.0	28.3	4	8.5	15	11/16	14	4
PMF-3/16-N02	3/16	12	NPT1/4	M12×P1.0	30.3	4	10.5	15	11/16	14	4
PMF-1/4-N01	1/4	13	NPT1/8	M14×P1.0	30.9	4	8.5	15	11/16	17	5
PMF-1/4-N02	1/4	13	NPT1/4	M14×P1.0	30.9	4	10.5	15	11/16	17	5
PMF-5/16-N01	5/16	14	NPT1/8	M16×P1.0	29.5	5	8.5	18	3/4	19	6
PMF-5/16-N02	5/16	14	NPT1/4	M16×P1.0	31.5	5	10.5	18	3/4	19	6
PMF-5/16-N03	5/16	14	NPT3/8	M16×P1.0	32.5	5	11.5	18	1/8	19	6
PMF-3/8-N02	3/8	17	NPT1/4	M20×P1.0	33.3	5	10.5	20	15/16	24	8
PMF-3/8-N03	3/8	17	NPT3/8	M20×P1.0	34.3	5	11.5	20	15/16	24	8
PMF-1/2-N02	1/2	20	NPT1/4	M22×P1.0	39.0	5	10.5	22	15/16	26	10
PMF-1/2-N03	1/2	20	NPT3/8	M22×P1.0	39.0	5	11.5	22	15/16	26	10
PMF-1/2-N04	1/2	20	NPT1/2	M22×P1.0	41.0	5	14.5	22	15/16	26	10

#### PMM bucklehead union



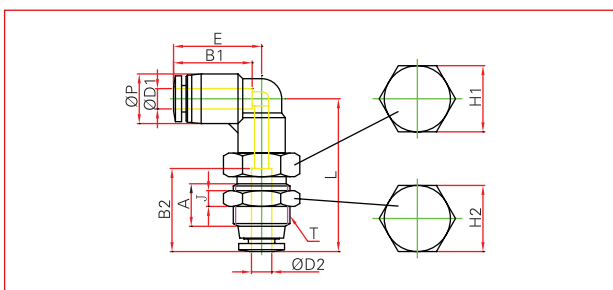
MODEL	ØD	T	L	E	B	H	ORIFICE
PMM-5/32	5/32	M12XP1.0	30	4	15	14	3
PMM-3/16	3/16	M14XP1.0	31.5	4	15	17	4
PMM-1/4	1/4	M14XP1.0	31.5	4	15	17	5
PMM-5/16	5/16	M16XP1.0	34.5	5	18	19	7
PMM-3/8	3/8	M20XP1.0	41	5	22	24	8
PMM-1/2	1/2	M22XP1.0	44.8	5	22	26	11

## PLJ plug-in elbow



MODEL	ØD1	ØD2	ØP	L	E	A	B	ORIFICE
PLJ-5/23	5/32	5/32	11	33.7	24	22	15	2
PLJ-3/16	3/16	3/16	11	43.3	25.2	24	15	2.6
PLJ-1/4	1/4	1/4	13	47.5	25.2	25	15	4.2
PLJ-5/16	5/16	5/16	14.4	41.5	30.5	26	18	6
PLJ-3/8	3/8	3/8	18.4	54.6	37.4	28	22	7
PLJ-1/2	1/2	1/2	21	32.0	40.4	30	22	9
PLJ-1/4-5/32	1/4	5/32	11	43.8	25.2	25	15	2
PLJ-5/16-1/4	5/16	1/4	13.0	48.5	30.5	26	15	4.2
PLJ-3/8-1/4	3/8	1/4	13.0	50.5	37.4	28	15	4.2
PLJ-3/8-5/16	3/8	5/16	14.4	54.3	40.4	28	18	6

## PLM bucklehead union elbow

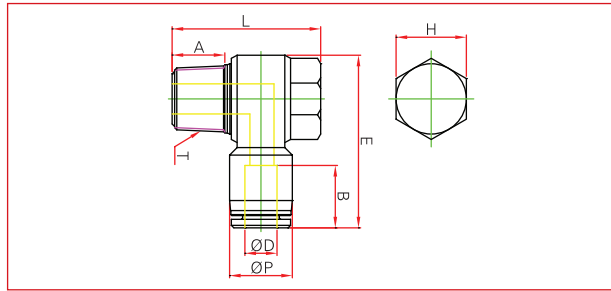


MODEL	ØD1	ØD2	P	T	L	E	A	B1	B2	J	H1	H2	ORIFICE
PLM5/32	5/32	5/32	11	M12 x P1.0	32.4	18.7	9.0	16.3	16.3	4.0	14	14	3.0
PLM3/16	3/16	3/16	13	M14 x P1.0	34.7	19.2	10.0	16.9	16.9	4.0	17	17	3.0
PLM1/4	1/4	1/4	13	M14 x P1.0	38.8	20.5	11.0	17.4	17.4	4.0	17	17	4.5
PLM5/16	5/16	5/16	14.4	M16 x P1.0	40.3	23.1	11.5	19.1	19.1	5.0	19	19	6.0
PLM3/8	3/8	3/8	18.4	M20 x P1.0	42.2	23.8	12.0	19.8	19.8	5.0	24	24	7.0
PLM1/2	1/2	1/2	21	M22 x P1.0	48.4	28.3	15.0	23.0	23.0	5.0	26	26	9.0

## ONE-TOUCH FITTINGS

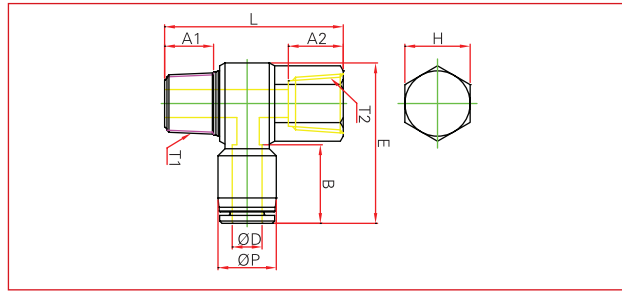
> INCH SYSTEM

### PH male banjo



MODEL	ØD	ØP	T	L	E	A	B	H	ORIFICE
PH-1/8-UNF	1/8	11	UNF10/32	18.2	21.5	3.6	15	5/16	1.5
PH-5/32-UNF	5/32	11	UNF10/32	18.2	25.1	3.6	15	5/16	1.5
PH-5/32-N01	5/32	11	NPT1/8	25.0	30.5	8.0	15	7/16	3.0
PH-5/32-N02	5/32	11	NPT1/4	28.8	34.5	10.0	15	5/16	3.2
PH-3/16-UNF	3/16	11	UNF10/32	18.2	26.6	3.6	15	5/16	1.5
PH-3/16-N01	3/16	11	NPT1/8	25.0	31.4	8.0	15	7/16	3.0
PH-3/16-N02	3/16	11	NPT1/4	28.8	35.3	10.0	15	19/32	3.5
PH-3/16-N03	3/16	11	NPT3/8	33.7	39.1	11.0	15	3/4	3.5
PH-1/4-UNF	1/4	13	UNF10/32	18.2	28.7	3.6	15	5/16	1.5
PH-1/4-N01	1/4	13	NPT1/8	25.0	32.0	8.0	15	7/16	3.0
PH-1/4-N02	1/4	13	NPT1/4	28.8	35.9	10.0	15	19/32	4.5
PH-1/4-N03	1/4	13	NPT3/8	33.7	39.7	11.0	15	3/4	6.0
PH-5/16-N01	5/16	14.4	NPT1/8	25.0	33.0	8.0	18	7/16	3.0
PH-5/16-N02	5/16	14.4	NPT1/4	28.8	36.8	10.0	18	19/32	4.5
PH-5/16-N03	5/16	14.4	NPT3/8	33.7	40.1	11.0	18	3/4	6.0
PH-5/16-N04	5/16	14.4	NPT1/2	39.4	45.8	14.0	18	15/16	6.5
PH-3/8-N02	3/8	18.4	NPT1/4	28.8	37.5	10.0	22	19/32	4.5
PH-3/8-N03	3/8	18.4	NPT3/8	33.7	42.1	11.0	22	3/4	6.0
PH-3/8-N04	3/8	18.4	NPT1/2	39.4	47.3	14.0	22	15/16	7.0
PH-1/2-N03	1/2	21	NPT3/8	33.7	45.1	11.0	22	3/4	6.0
PH-1/2-N04	1/2	21	NPT1/2	39.4	50.5	14.0	22	15/16	8.0

## PHF female banjo

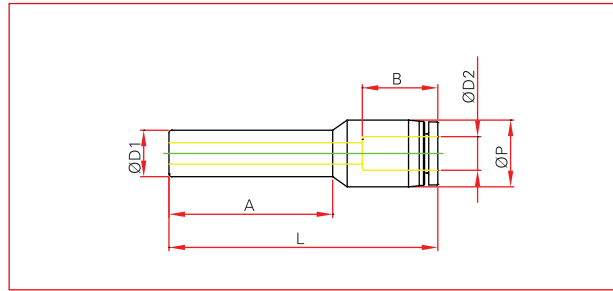


MODEL	ØD	ØP	T1	T2	L	E	A1	A2	B	H	ORIFICE
PHF5/32-UNF	5/32	11	UNF 10/32	UNF 10/32	20.0	25.1	3.6	7.0	15	5/16	1.5
PHF5/32-N01	5/32	11	NPT 1/8	NPT 1/8	30.9	30.5	8.5	8.5	15	9/16	3.0
PHF3/16-UNF	3/16	13	UNF 10/32	UNF 10/32	20.0	26.6	3.6	7.0	15	5/16	1.5
PHF3/16-N01	3/16	13	NPT 1/8	NPT 1/8	30.9	31.4	8.5	8.5	15	9/16	3.0
PHF3/16-N02	3/16	13	UNF 1/4	UNF 1/4	35.8	35.3	10.5	10.5	15	11/16	4.0
PHF3/16-N03	3/16	13	NPT 3/8	NPT 3/8	41.0	39.1	11.5	11.5	15	7/8	5.0
PHF1/4-UNF	1/4	13	UNF 10/32	UNF 10/32	20.0	28.7	3.6	7.0	15	5/16	2.5
PHF1/4-N01	1/4	13	NPT 1/8	NPT 1/8	30.9	32.0	8.5	8.5	15	9/16	3.0
PHF1/4-N02	1/4	13	NPT 1/4	NPT 1/4	35.8	35.9	10.5	10.5	15	11/16	4.0
PHF1/4-N03	1/4	13	NPT 3/8	NPT 3/8	41.0	39.7	11.5	11.5	15	7/8	5.0
PHF5/16-N01	5/16	14.4	NPT 1/8	NPT 1/8	30.9	33.0	8.5	8.5	16	9/16	3.0
PHF5/16-N02	5/16	14.4	NPT 1/4	NPT 1/4	35.8	36.8	10.5	10.5	16	11/16	4.0
PHF5/16-N03	5/16	14.4	NPT 3/8	NPT 3/8	41.0	40.1	11.5	11.5	16	7/8	5.0
PHF5/16-N04	5/16	14.4	NPT 1/2	NPT 1/2	50.0	45.8	14.5	14.5	16	1	6.0
PHF3/8-N02	3/8	18.4	NPT 1/4	NPT 1/4	35.8	37.5	10.5	10.5	22	11/16	4.0
PHF3/8-N03	3/8	18.4	NPT 3/8	NPT 3/8	41.0	42.1	11.5	11.5	22	7/8	5.0
PHF3/8-N04	3/8	18.4	NPT 1/2	NPT 1/2	50.0	47.3	14.5	14.5	22	1	6.0
PHF1/2-N03	1/2	21	NPT 3/8	NPT 3/8	41.0	45.1	11.5	11.5	22	7/8	5.0
PHF1/2-N04	1/2	21	NPT 1/2	NPT 1/2	50.0	50.5	14.5	14.5	22	1	6.0

## ONE-TOUCH FITTINGS

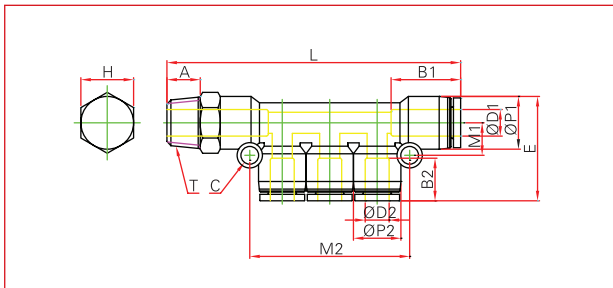
### > INCH SYSTEM

#### PGJ plug-in reducer



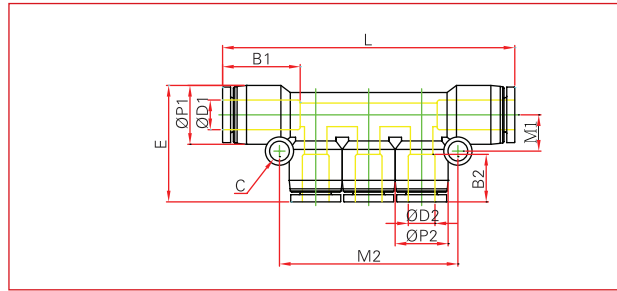
MODEL	ØD1	ØD2	ØP	L	A	B	ORIFICE
PGJ-1/8-1/4	1/8	1/4	13	35.8	16.5	15	1.3
PGJ-5/32-1/8	5/32	1/8	11	31.7	18.5	15	2
PGJ-5/32-1/4	5/32	1/4	13	37.6	18.5	15	2
PGJ-1/4-1/8	1/4	1/8	11	31.7	20.9	15	2.5
PGJ-1/4-5/32	1/4	5/32	11	40.4	23.6	15	3.4
PGJ-5/16-5/32	5/16	5/32	11	42.9	26.0	15	5
PGJ-5/16-1/4	5/16	1/4	13	48.0	29.7	15	4
PGJ-3/8-1/4	3/8	1/4	13	48.0	31.3	18	5.6
PGJ-3/8-5/16	3/8	5/16	14.4	44.7	25.0	18	6.5
PGJ-1/2-1/4	1/2	1/4	13	48.3	30.9	15	5.7
PGJ-1/2-5/16	1/2	5/16	14.4	48.5	33.2	18	7
PGJ-1/2-3/8	1/2	3/8	18.4	51.8	31.8	22	8

#### PKD male reducer triple branch



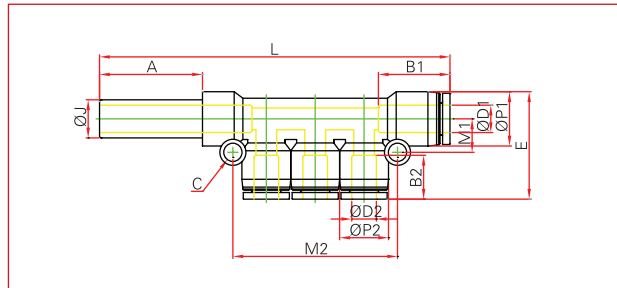
MODEL	ØD1	ØD2	T	A	ØP1	ØP2	L	E	C	B1	B2	M1	M2	H	ORIFICE
PKD3/16-5/32-N01	3/16	5/32	NPT1/8	6.5	11.5	10.5	69.8	26.3	3.2	15	15	7.6	34.0	7/16	2.6
PKD1/4-5/32-N01	1/4	5/32	NPT1/8	8.5	13	10.5	71.1	26.6	3.2	15	15	6.6	36.0	1/2	3.2
PKD5/16-5/32-N02	5/16	5/32	NPT1/4	10.5	14.5	10.5	77.7	28.2	4.2	18	15	9.2	34.8	9/16	3.2
PKD5/16-3/16-N02	5/16	3/16	NPT1/4	10.5	14.5	11.5	80.9	29.0	4.2	18	15	9.3	41.1	9/16	4.0
PKD5/16-1/4-N02	5/16	1/4	NPT1/4	10.5	14.5	13	84.0	30.0	4.2	18	15	9.7	43.5	9/16	5.0
PKD3/8-1/4-N03	3/8	1/4	NPT3/8	11.5	17.5	13	86.9	32.2	4.2	22	15	11.0	43.5	11/16	5.0
PKD3/8-5/16-N03	3/8	5/16	NPT3/8	11.5	17.5	14.5	96.3	34.5	4.2	22	18	8.5	47.0	11/16	6.6

**PKG** reducer triple branch union



MODEL	ØD1	ØD2	ØP1	ØP2	L	E	C	B1	B2	M1	M2	ORIFICE
PKG3/16-5/32	3/16	5/32	11	11	60.5	26.3	4.2	15	15	7.6	34.0	3.2
PKG1/4-5/32	1/4	5/32	13	11	61.6	26.6	4.2	15	15	8.8	36.0	3.2
PKG5/16-5/32	5/16	5/32	14.4	11	65.6	28.2	4.2	18	15	9.2	34.8	3.2
PKG5/16-3/16	5/16	3/16	14.4	11	68.7	28.9	4.2	18	15	9.3	41.1	4
PKG5/16-1/4	5/16	1/4	14.4	13	71.9	30	4.2	18	15	9.7	43.5	5
PKG3/8-1/4	3/8	1/4	18.4	13	74.2	32.2	4.2	22	15	11.0	43.5	5
PKG3/8-5/16	3/8	5/16	18.4	14.4	83.6	34.5	4.2	22	18	8.5	47.0	6

**PKJ** reducer triple branch union



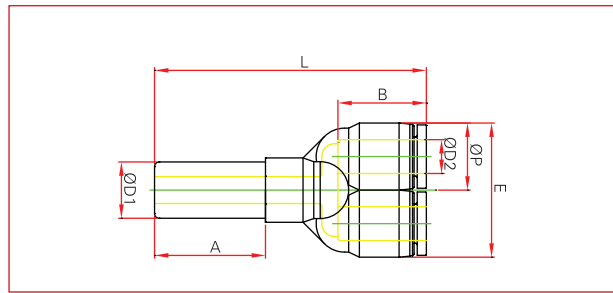
MODEL	ØD1	ØD2	ØJ	A	ØP1	ØP2	L	E	C	B1	B2	M1	M2	ORIFICE
PKJ3/16-5/32	3/16	5/32	3/16	24	11	11	82.4	25.8	4.2	15	15	7.6	34.0	2.6
PKJ1/4-5/32	1/4	5/32	1/4	25	13	11	84.3	26.8	4.2	15	15	6.8	36.0	3.2
PKJ5/16-5/32	5/16	5/32	5/16	26	14.4	11	89.5	28.5	4.2	18	15	9.2	34.8	3.2
PKJ5/16-3/16	5/16	3/16	5/16	26	14.4	11	91.9	29.0	4.2	18	15	9.3	41.1	4
PKJ5/16-1/4	5/16	1/4	5/16	26	14.4	13	91.0	30.0	4.2	18	15	9.7	43.5	5
PKJ3/8-1/4	3/8	1/4	3/8	28	18.4	13	99.8	32.2	4.2	22	15	11.0	43.5	5
PKJ3/8-5/16	3/8	5/16	3/8	28	18.4	14.4	109.7	34.5	4.2	22	18	8.5	47.0	6



## ONE-TOUCH FITTINGS

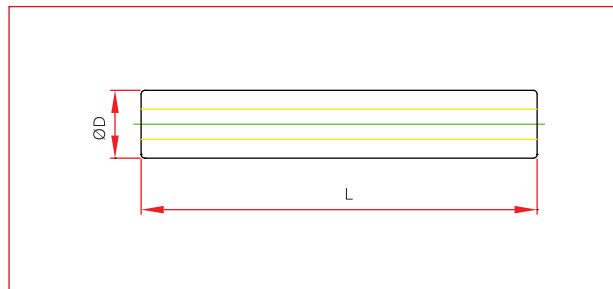
> INCH SYSTEM

### PYJ plug-in J



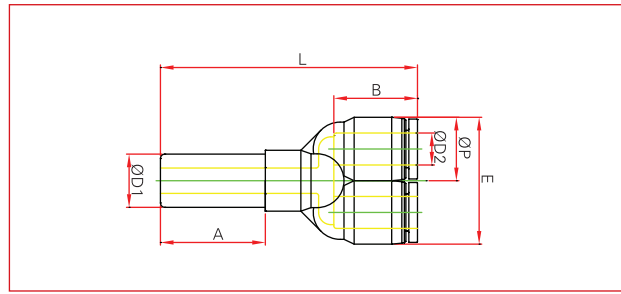
MODEL	ØD1	ØD2	ØP	L	E	A	B	ORIFICE
PYJ-5/32	5/32	5/32	11	54.2	22.1	24	15	2.6
PYJ-3/16	3/16	3/16	13	57.9	26	24	15	2.6
PYJ-1/4	1/4	1/4	13	60.9	26	25	15	4
PYJ-5/16	5/16	5/16	14.4	360.5	29.8	26	15	5.6
PYJ-3/8	3/8	3/8	16.4	68.5	36.8	28	16	7
PYJ-1/2	1/2	1/2	21	80.6	42.4	30	22	7

### PIJ plug



MODEL	ØD	L	ORIFICE
PIJ 5/32	5/32	36.0	2.5
PIJ 3/16	3/16	38.0	2.8
PIJ 1/4	1/4	40.0	3.5
PIJ 5/16	5/16	42.0	5.0
PIJ 3/8	3/8	45.0	7.0
PIJ 1/2	1/2	45.0	9.2

## PWJ plug-in Y

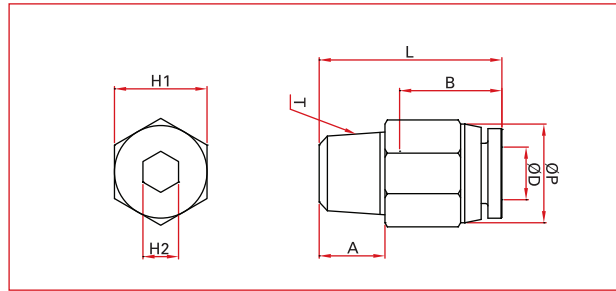


MODEL	ØD1	ØD2	ØP	L	E	A	B	ORIFICE
PWJ-1/4-5/32	1/4	5/16	11	55.2	21.0	25.0	15	3
PWJ-5/16-1/4	5/16	1/4	13.0	61.9	29.0	26.3	15	5
PWJ-3/8-1/4	3/8	1/4	13.0	64.2	35.0	28.0	15	5
PWJ-3/8-5/16	3/8	5/16	14.4	62.8	35.0	28.0	18	6

## ONE-TOUCH FITTINGS / G TYPE

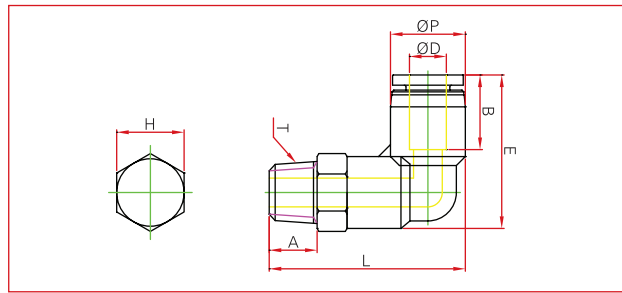
> METRIC SYSTEM, BSPP, WITH INTEGRAL O-RING SEAL

### PC male straight



MODEL	ØD	T (Thread)	L (mm)	A (mm)	B	H1 (mm)	H2 (mm)	ORIFICE
PC04-G01	4	G 1/8	22.1	5.5	15	14	3	3
PC04-G02	4	G 1/4	21.4	7.5	15	17	3	3
PC06-G01	6	G 1/6	23.2	5.5	15	14	4	4
PC06-G02	6	G 1/4	23.5	7.5	15	17	4	4
PC06-G03	6	G 3/8	20.5	7.5	15	20	4	4
PC08-G01	8	G 1/8	25.5	5.5	18	14	4	4
PC08-G02	8	G 1/4	24.5	7.5	18	17	5	5
PC08-G03	8	G 3/8	21	7.5	18	20	6	6
PC08-G04	8	G 1/2	24.5	10	18	24	6	6
PC10-G01	10	G 1/8	29.2	5.5	22	17	4	4
PC10-G02	10	G 1/4	30.9	7.5	22	17	6	6
PC10-G03	10	G 3/8	27.2	7.5	22	20	6	6
PC10-G04	10	G 1/2	30.4	10	22	24	8	8
PC12-G02	12	G 1/4	33.5	7.5	22	21	6	6
PC12-G03	12	G 3/8	28.5	7.5	22	21	8	8
PC12-G04	12	G 1/2	31	10	22	24	8	8
PC16-G03	16	G 3/8	35.5	7.5	24	24	8	8
PC16-G04	16	G 1/2	38	10	24	24	10	10

## PL male elbow

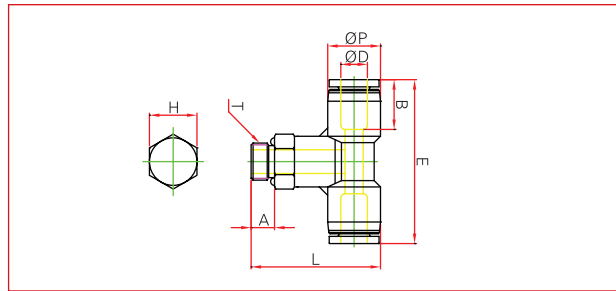


MODEL	ØD	T (Thread)	L	E	A	B	H	ORIFICE
PL04-G01	4	G 1/8	30.3	22.1	5.5	15	14	2.5
PL04-G02	4	G 1/4	32	21.4	7.5	15	17	2.5
PL06-G01	6	G 1/8	32.3	23.2	5.5	15	14	2.5
PL06-G02	6	G 1/4	34.8	23.5	7.5	15	17	4
PL06-G03	6	G 3/8	36.2	20.5	7.5	15	20	4
PL08-G01	8	G 1/8	32.5	25.5	5.5	18	14	4
PL08-G02	8	G 1/4	35.5	24.5	7.5	18	17	4
PL08-G03	8	G 3/8	37.5	21	7.5	18	20	6
PL08-G04	8	G 1/2	40	24.5	10	18	24	6
PL10-G01	10	G 1/8	38.9	29.2	5.5	22	17	6
PL10-G02	10	G 1/4	42.5	30.9	7.5	22	17	6.5
PL10-G03	10	G 3/8	44.1	27.2	7.5	22	20	6.5
PL10-G04	10	G 1/2	46.9	30.4	10	22	24	7.5
PL12-G02	12	G 1/4	44.5	33.5	7.5	22	19	6.5
PL12-G03	12	G 3/8	46.6	28.5	7.5	22	20	7
PL12-G04	12	G 1/2	49.6	31	10	22	24	7.5
PL16-G03	16	G 3/8	55.4	35.5	7.5	24	24	11
PL16-G04	16	G 1/2	60	38	10	24	24	14

## ONE-TOUCH FITTINGS / G TYPE

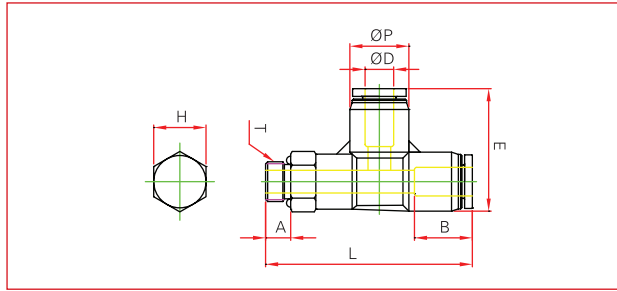
> METRIC SYSTEM, BSPP, WITH INTEGRAL O-RING SEAL

### PT male branch tee



MODEL	ØD	T (Thread)	L	E	A	B	H	ORIFICE
PT04-G01	4	G 1/8	30.3	36.6	5.5	15	14	2.5
PT04-G02	4	G 1/4	32	36.6	7.5	15	17	2.5
PT06-G01	6	G 1/8	32.3	37.8	5.5	15	14	2.5
PT06-G02	6	G 1/4	34.8	37.8	7.5	15	17	4
PT06-G03	6	G 3/8	36.2	37.8	7.5	15	20	4
PT08-G01	8	G 1/8	32.5	45	5.5	18	14	4
PT08-G02	8	G 1/4	35.5	45	7.5	18	17	4
PT08-G03	8	G 3/8	37.5	45	7.5	18	20	6
PT08-G04	8	G 1/2	40	45	10	18	24	6
PT10-G01	10	G 1/8	38.9	55.4	5.5	22	17	6
PT10-G02	10	G 1/4	42.5	55.4	7.5	22	17	6.5
PT10-G03	10	G 3/8	44.1	55.4	7.5	22	20	6.5
PT10-G04	10	G 1/2	46.9	55.4	10	22	24	7.5
PT12-G02	12	G 1/2	44.5	59	7.5	22	19	6.5
PT12-G03	12	G 3/8	46.6	59	7.5	22	20	7
PT12-G04	12	G 1/2	49.6	59	10	22	24	7.5
PT16-G03	16	G 3/8	55.4	65	7.5	24	24	11
PT16-G04	16	G 1/2	60	65	10	24	24	14

**PST** male branch tee

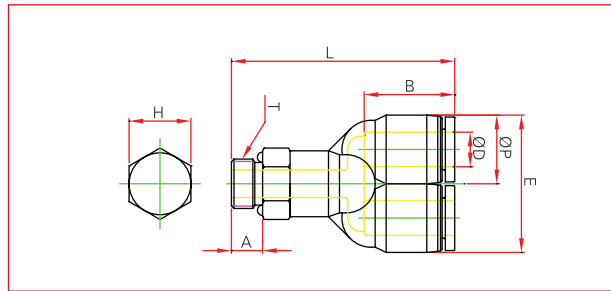


MODEL	ØD	T (Thread)	L	E	A	B	H	ORIFICE
PST04-G01	4	G 1/8	43.5	26.3	5.5	15	14	2.5
PST04-G02	4	G 1/4	45.6	28	7.5	15	17	2.5
PST06-G01	6	G 1/8	45	26.9	5.5	15	14	2.5
PST06-G02	6	G 1/4	47.3	28.6	7.5	15	17	4
PST06-G03	6	G 3/8	48.6	30.3	7.5	15	20	4
PST08-G01	8	G 1/8	50.6	30.5	5.5	18	14	4
PST08-G02	8	G 1/4	53.7	32.2	7.5	18	17	4
PST08-G03	8	G 3/8	55	33.9	7.5	18	20	6
PST08-G04	8	G 1/2	57.7	36.2	10	18	24	6
PST10-G01	10	G 1/8	61	37.4	5.5	22	17	6
PST10-G02	10	G 1/4	64.3	37.4	7.5	22	17	6.5
PST10-G03	10	G 3/8	66.2	39.1	7.5	22	20	6.5
PST10-G04	10	G 1/2	68.8	41.4	10	22	24	7.5
PST12-G02	12	G 1/4	65.2	40.4	7.5	22	19	6.5
PST12-G03	12	G 3/8	67.8	40.9	7.5	22	20	7
PST12-G04	12	G 1/2	70.8	43.2	10	22	24	7.5

## ONE-TOUCH FITTINGS / G TYPE

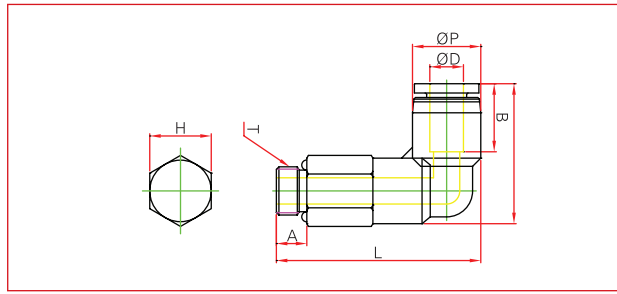
> METRIC SYSTEM, BSPP, WITH INTEGRAL O-RING SEAL

### PWT male Y



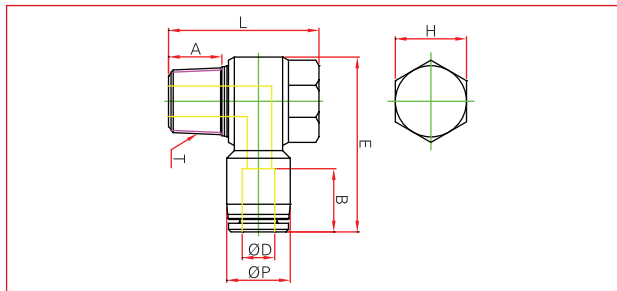
MODEL	ØD	T (Thread)	L	E	A	B	H	ORIFICE
PWT04-G01	4	G 1/8	42.6	22.1	5.5	15	14	2.5
PWT04-G02	4	G 1/4	44.3	22.1	7.5	15	17	2.5
PWT06-G01	6	G 1/8	44.1	26	5.5	15	14	2.5
PWT06-G02	6	G 1/4	46.2	26	7.5	15	17	4
PWT06-G03	6	G 3/8	47.8	26	7.5	15	20	4
PWT08-G01	8	G 1/8	46.5	29.8	5.5	18	14	4
PWT08-G02	8	G 1/4	48.5	29.8	7.5	18	17	4
PWT08-G03	8	G 3/8	50.2	29.8	7.5	18	20	4
PWT08-G04	8	G 1/2	53.5	29.8	10	18	24	4
PWT10-G01	10	G 1/8	55.2	36.8	5.5	22	17	6.5
PWT10-G02	10	G 1/4	57.2	36.8	7.5	22	17	6.5
PWT10-G03	10	G 3/8	58.9	36.8	7.5	22	20	6.5
PWT10-G04	10	G 1/2	62.2	36.8	10	22	24	7.5
PWT12-G02	12	G 1/4	60	42.4	7.5	22	19	6.5
PWT12-G03	12	G 3/8	61.7	42.4	7.5	22	20	6.5
PWT12-G04	12	G 1/2	65	42.4	10	22	24	7.5

## PLL extended male elbow



MODEL	ØD	T (Thread)	L	E	A	B	H	ORIFICE
PLL04-G01	4	G 1/8	42	24	5.5	15	14	2.5
PLL04-G02	4	G 1/4	44	24	7.5	15	17	2.5
PLL06-G01	6	G 1/8	45.8	25.2	5.5	15	14	2.4
PLL06-G02	6	G 1/4	47.8	25.2	7.5	15	17	4
PLL06-G03	6	G 3/8	49	25.2	7.5	15	20	4
PLL08-G01	8	G 1/8	48	30.5	5.5	18	14	4
PLL08-G02	8	G 1/4	51.3	30.5	7.5	18	17	4
PLL08-G03	8	G 3/8	52.6	30.5	7.5	18	20	4
PLL08-G04	8	G 1/2	51.7	30.5	10	18	24	4
PLL10-G01	10	G 1/8	57.1	37.4	5.5	22	17	6.5
PLL10-G02	10	G 1/4	59.2	37.4	7.5	22	17	6.5
PLL10-G03	10	G 3/8	60.8	37.4	7.5	22	20	6.5
PLL10-G04	10	G 1/2	65.8	37.4	10	22	24	7.5
PLL12-G02	12	G 1/4	66	40.4	7.5	22	19	6.5
PLL12-G03	12	G 3/8	67.6	40.4	7.5	22	20	6.5
PLL12-G04	12	G 1/2	73.1	40.4	10	22	24	7.5

## PH male banjo



MODEL	L	T (Thread)	E	ØD	B	H	ORIFICE
PH04-G01	24	G 1/8	28	4	15	12	2.5
PH04-G02	27.3	G 1/4	31.5	4	15	14	2.5
PH06-G01	24	G 1/8	30	6	15	12	4
PH06-G02	27.3	G 1/4	33	6	15	14	4
PH06-G03	32	G 3/8	36.6	6	15	19	4
PH08-G01	24	G 1/8	30.3	8	18	12	4
PH08-G02	27.3	G 1/4	34.4	8	18	14	5
PH08-G03	32	G 3/8	37.9	8	18	19	5
PH08-G04	41	G 1/2	42.6	8	18	24	5
PH10-G02	27.3	G 1/4	36.6	10	22	14	5
PH10-G03	32	G 3/8	40.2	10	22	19	8
PH10-G04	41	G 1/2	46	10	22	24	8
PH12-G02	27.3	G 1/4	37.5	12	22	14	5
PH12-G03	32	G 3/8	41	12	22	19	8
PH12-G04	41	G 1/2	48.4	12	22	24	10